

# BRUNA

NOZZLES

2026



U.S. & CANADA

# INDEX

## (1-1/4") (1") (3/4")

- 6** TARANTULA 1"  
MAINTENANCE KIT
- 7** TARANTULA 3/4"  
MAINTENANCE KIT
- 8** GRENADE 80  
GRENADE 60
- 9** GRENADE 120  
GRENADE 100
- 10** BULLET GRENADE 60  
GRENADE 70
- 11** FLOUNDER 1"  
FRANKENSTEIN
- 12** ALIEN 1"  
MAINTENANCE KIT
- 13** ALIEN 3/4"  
MAINTENANCE KIT
- 14** BREAKER 1"  
BASIC 3/4"
- 15** VAMPIRE 1"  
VAMPIRE 3/4"  
  
TANK CLEANER 1"
- 16** TANK CLEANER 3/4"  
HEAD

## (1/2") (3/8")

- 18** TARANTULA 80  
MAINTENANCE KIT
- 19** TARANTULA 1/2"  
MAINTENANCE KIT
- 20** TARANTULA 3/8"  
MAINTENANCE KIT
- 21** BREAKER 1/2"  
BREAKER 3/8"
- 22** ALIEN TURBO 1/2"  
MAINTENANCE KIT
- 23** ALIEN 1/2"  
MAINTENANCE KIT
- 24** HEAVY FLOUNDER 1/2"  
LIGHT FLOUNDER 1/2"
- 25** GRENADE 50  
LYNX 1/2"
- 26** ROOT-CUTTER 1/2"  
REPLACEMENT BLADES
- 27** LIGHT VIBRATING 1/2"
- 28** BUTTON 1/2"  
BRUNA 1/2"
- 29** BUTTON 1/2" 12 JETS  
BUTTON 1/2" MIXED
- 30** GRADES 30° 6 JETS  
GRADES 7° 6 JETS
- 31** BULLET 1/2"  
VAMPIRE 1/2"
- 32** ROTATING WIPE CATCHER 1/2"  
BASIC WIPE-CATCHER 1/2"
- 33** TIGER 3/8"  
BASIC 3/8"
- 34** ANACONDA *the big one*  
ANACONDA *the small one*
- 35** CAMERA NOZZLE 1/2"  
ANACONDA 3/8"
- 36** TANK CLEANER 1/2"  
HEAD

## (1/4") (1/8")

- 38** ALIEN 1/4"  
MAINTENANCE KIT
- 39** TARANTULA 1/4"  
MAINTENANCE KIT
- 40** BREAKER 1/4"  
TIGER 1/4"
- 41** BASIC 1/4"  
BRUNA 1/4"
- 42** ROTATING WIPE CATCHER 1/4"  
ANACONDA 1/4"
- 43** MINI VIBRATING 1/4"
- 44** K-TURBO 1/8" 6 JETS  
K-TURBO 1/8" 3 JETS
- 45** BREAKER 1/8"  
ANACONDA 1/8"
- 46** CAMERA NOZZLE 1/4"  
TURBOROTATING

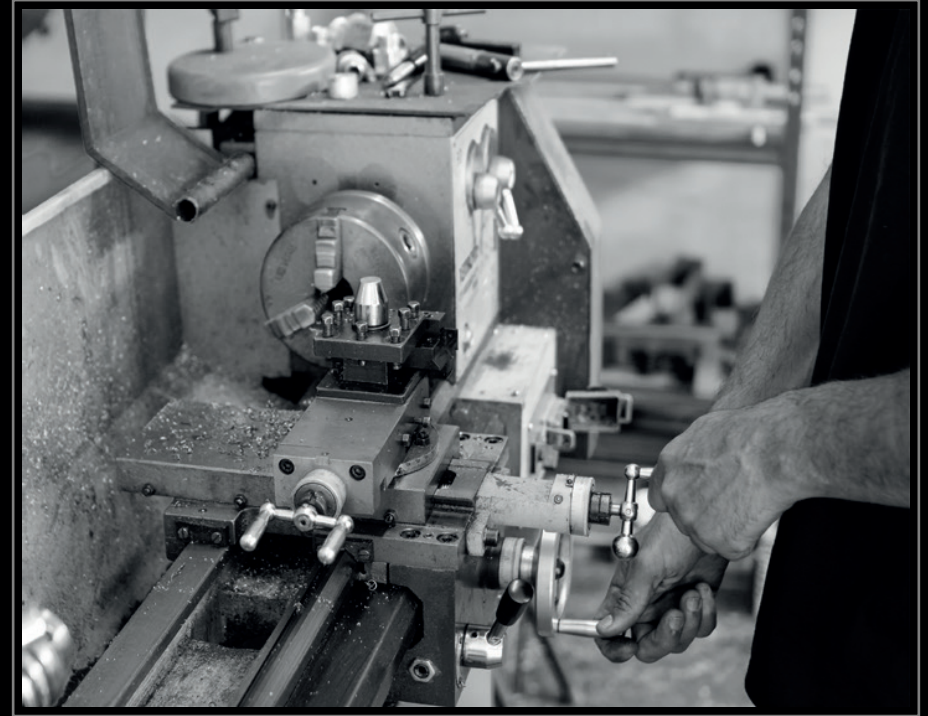
## OTHER PRODUCTS

- 48** NOZZLE HOLDER  
FLEX HOSES
- 49** ANTI-RETURN BAR  
REEL

## High-Performance Jetting Nozzles You Can Trust

We design and manufacture high-performance jetting nozzles for pipe and sewer cleaning. Each nozzle is precisely engineered and calibrated to match the pump output of jettors and vacuum trucks, ensuring maximum efficiency in cleaning and sewer rehabilitation.

Our nozzles are trusted by municipalities, environmental service providers, plumbing professionals, and specialized contractors across the industry. Whether for routine maintenance or rehabilitation projects, our solutions deliver the power, durability, and performance needed to get the job done.





**1-1/4"**

**1"**

**3/4"**

# DEEP CLEANING

ROOTS | LIMESCALE | SOAPS | GREASE

## TARANTULA 1"

**Thread:** (1" - 1/4") or 1" or 3/4"

**Pipe diameter:** 8" - 36" (recommended)

**Jets:** (R) 2 x M10 (25°) // (F) 1 x M10 (15°)

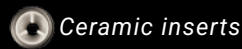
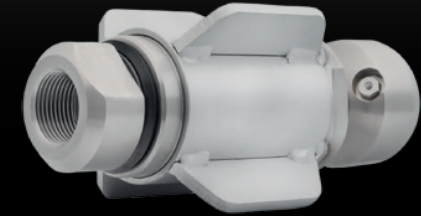
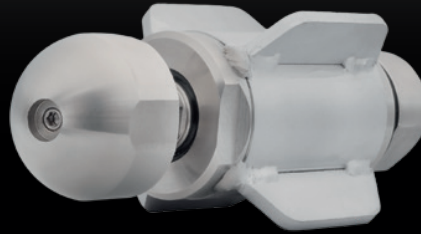
**Waterflow:** from 53 gpm

**Dimensions:** 4.7" x 8.6"

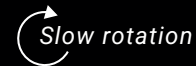
**Weight:** 9.5 lbs

**Price:** USD \$1,850.00

Designed for pipe maintenance, especially when the removal of roots obstructing pipes is required.



Ceramic inserts



Slow rotation

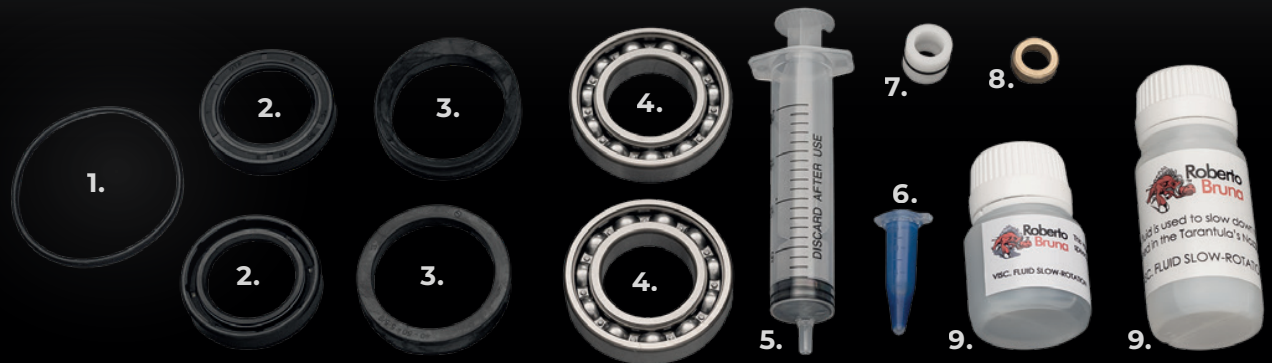


Optional front jet

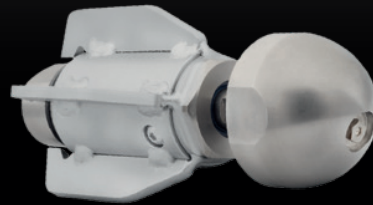
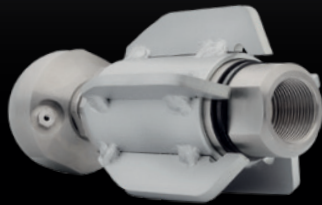
## MAINTENANCE KIT

1. O-ring
2. Shaft Seal
3. Weep Seal
4. Bearing
5. Dispensing Syringe
6. Adhesive
7. High pressure seal
8. Brass seat
9. Viscous Fluid

**Price:** USD \$125.00



**TARANTULA 3/4"**



**Thread:** 3/4"

**Pipe diameter:** 8" - 16" (recommended)

**Jets:** (R) 2 x M8 (25°) // (F) 1 x M8 (15°)

**Waterflow:** from 26 gpm

**Dimensions:** 3.3" x 7.4"

**Weight:** 4.8 lbs

**Price: USD \$1,350.00**

Just like the 1" model, our 3/4" Tarantula stands out for its ability to cut and remove roots from inside pipes thanks to its head with two jets that spins automatically.



Ceramic inserts

Slow rotation

**MAINTENANCE KIT**



**1.** Viscous Fluid

**2.** Dispensing Syringe with sealing washers

**3.** Adhesive

**4.** Grease fitting

**5.** High pressure seal & Brass seat

**6.** Bearing

**7.** Shaft Seal

**8.** Weep Seal

**9.** O-ring

**10.** Wave Spring

**Price: USD \$117.00**

# GENERAL CLEANING

## GRENADE 80

**Thread:** 1" or 3/4"

**Pipe diameter:** 8" - 24" (recommended)

**Jets:** (R) 10 x M8 (30° - 10°) // (F) 1 x M8

**Waterflow:** from 42 gpm


**Dimensions:** 3.1" x 7"

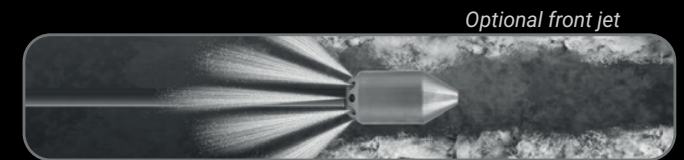
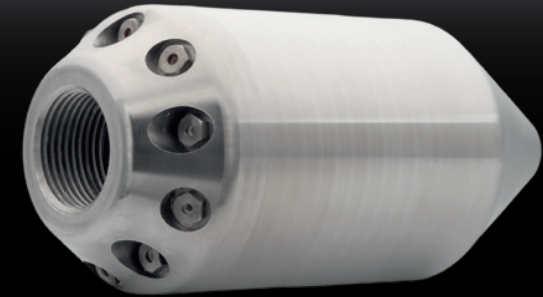
**Weight:** 7.9 lbs

Price: **USD \$670.00**

Known for its efficiency and functionality, with rear jets at 30° and 10° that ensure water reaches the pipe walls effectively for optimal cleaning performance.



 Ceramic inserts



## GRENADE 60

**Thread:** 1" or 3/4"

**Pipe diameter:** 6" - 16" (recommended)

**Jets:** (R) 6 x M8 (30° - 10°) // (F) 1 x M8

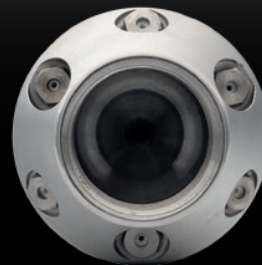
**Waterflow:** from 16 gpm


**Dimensions:** 2.3" x 4.3"

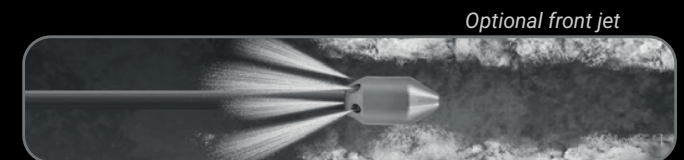
**Weight:** 2.6 lbs

Price: **USD \$450.00**

Nozzles with rear jets at different angles for general cleaning, removing soap, grease, and all kinds of common buildup inside the pipe system.



 Ceramic inserts



## GRENADA 120



**Thread:** (1" - 1/4") or 1"

**Pipe diameter:** 10 - 48" (*recommended*)

**Jets:** (R) 15 x M13 (7° - 15° - 20°)

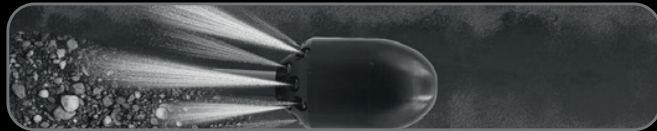
**Waterflow:** from 60 gpm


**Dimensions:** 4.7" x 7.8"

**Weight:** 22 lbs

**Price: USD \$1,450.00**

It is built to release water jets in a laminar flow, without turbulence, creating high-impact streams. Perfect for removing sand and stones from the bottom of the pipelines.



 *Ceramic inserts*

## GRENADA 100



**Thread:** 1" or 3/4"

**Pipe diameter:** 8" - 24" (*recommended*)

**Jets:** (R) 10 x M8 (7° - 15°)

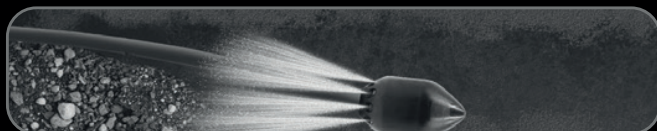
**Waterflow:** from 53 gpm


**Dimensions:** 3.9" x 6.8"

**Weight:** 10.1 lbs

**Price: USD \$930.00**

Its jets are strategically positioned to maximize the dragging of sediment and built-up dirt, allowing for a deep and uniform cleaning throughout the pipe interior.



 *Ceramic inserts*

# BOTTOM CLEANING

DIRT | SAND | GRAVEL

## BULLET GRENADE 60

**Thread:** 1" or 3/4"

**Pipe diameter:** 6" - 18" (recommended)

**Jets:** (R) 6 x M8 (10°)

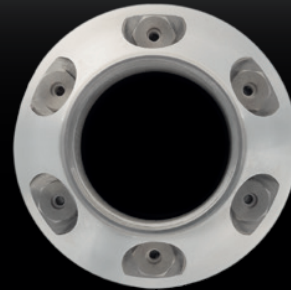
**Waterflow:** from 16 gpm


**Dimensions:** 2.3" x 5.2"

**Weight:** 2.6 lbs

Price: **USD \$450.00**

Specially designed to travel long distances quickly, the combination of different rear jet angles provides versatility that significantly improves cleaning efficiency.



 Ceramic inserts



## GRENADE 70

**Thread:** 1" or 3/4"

**Pipe diameter:** 6" - 24" (recommended)

**Jets:** 12 x M8 (7° - 14° - 21°)

**Waterflow:** from 32 gpm


**Dimensions:** 3" x 5"

**Weight:** 4.4 lbs

Price: **USD \$625.00**

Made of stainless steel, it offers durability and strength, and stands out for its ability to remove debris from the bottom of pipes thanks to its six powerful rear jets.



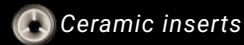
 Ceramic inserts



## FLOUNDER 1"



Swivel fitting included



Ceramic inserts

**Thread:** 1" or 3/4"

**Pipe diameter:** 8" - 48" (recommended)

**Jets:** (R) 8 x M8 (5° - 10°)

**Waterflow:** from 53 gpm

**Dimensions:** 5.8" x 8.8" // 5.8" x 13.3" (swivel fitting)

**Weight:** 19.8 lbs

**Price: USD \$1,200.00**

Bottom-cleaning nozzle with a flat shape and an internal channeling system that increases thrust power, making it perfect for cleaning the bottom of pipelines.



## FRANKENSTEIN



Swivel fitting included



Ceramic inserts

**Thread:** 1" or 3/4"

**Pipe diameter:** 8" - 48" (recommended)

**Jets:** (R) 5 x M8 (5°)

**Waterflow:** from 53 gpm

**Dimensions:** 5" x 14.1"

**Weight:** 26.4 lbs

**Price: USD \$1,150.00**

Designed with a tubular body, it includes an internal counterweight to maintain stability during operation, ensuring the water jets always hit the bottom of the pipe.



# DEEP UNBLOCKING

## ALIEN 1"

**Thread:** 1" or 3/4"

**Pipe diameter:** 8" - 24" (recommended)

**Jets:** (R) 6 x M8 (10°) + 1 rotating front jet (20°)

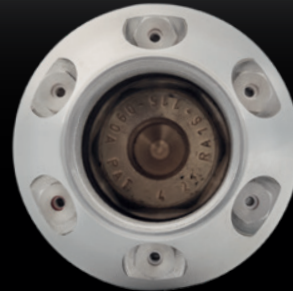
**Waterflow:** from 42 gpm


**Dimensions:** 2.3" x 5.2"

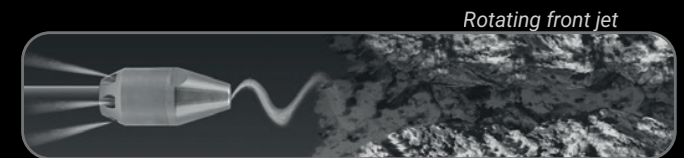
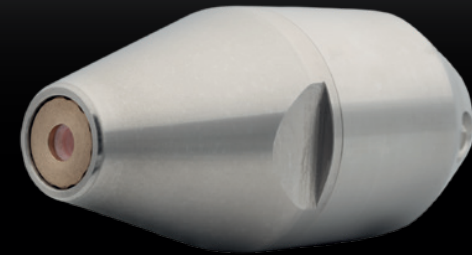
**Weight:** 3.5 lbs

**Price:** USD \$595.00

Its conical shape and rotating front jet allow it to drill and move forward quickly, providing a thorough and effective unclogging performance.



 Ceramic inserts



## MAINTENANCE KIT

**1.** Front plate

**2.** Jet Cartridge

**3.** Small O-ring

**4.** Large O-ring

**Price:** USD \$145.00



1.



2.

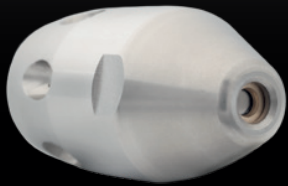



3.



4.

ALIEN 3/4"



 Ceramic inserts

**Thread:** 3/4"

**Pipe diameter:** 6" - 10" (recommended)

**Jets:** (R) 6 x M6 (30°) + 1 rotating front jet (20°)

**Waterflow:** from 16 gpm

**Dimensions:** 1.4" x 2.9"

**Weight:** 0.7 lbs

Price: **USD \$420.00**

The combination of its conical head and rear jets provides exceptional unclogging power, ensuring every corner of the pipe remains completely free of obstructions.

MAINTENANCE KIT



1. Rear cap

2. Jet

3. Jet Housing

4. Front plate

Price: **USD \$115.00**

**BREAKER 1"**

**Thread:** 1" or 3/4"

**Pipe diameter:** 6" - 20" (recommended)

**Jets:** (R) 6 x M6 (25°) // (F) 3 x M6 (15°)+ 1 x M6

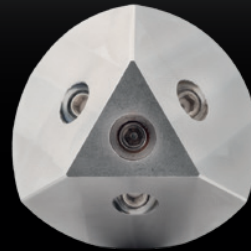
**Waterflow:** from 21 gpm


**Dimensions:** 1.8" x 3.5"

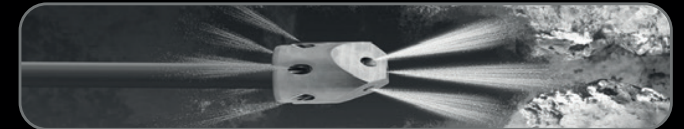
**Weight:** 1.5 lbs

Price: **USD \$280.00**

Cutting head with three front jets and six rear jets, the breaker plows through everything in its path, delivering extreme and efficient cleaning performance.



 Ceramic inserts



**BASIC 3/4"**

**Thread:** 3/4" or 1/2"

**Pipe diameter:** 6" - 12" (recommended)

**Jets:** (R) 6 x M6 (15°) // (F) 1 x M6

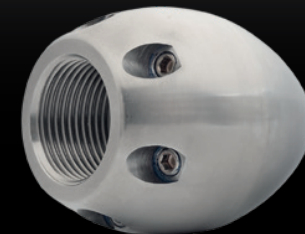
**Waterflow:** from 16 gpm


**Dimensions:** 2" x 2.6"

**Weight:** 1 lbs

Price: **USD \$160.00**

Its basic, economical, and practical design makes it an efficient option for pipe unclogging, ensuring that obstructions are effectively removed every time.

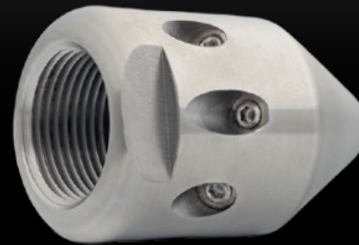
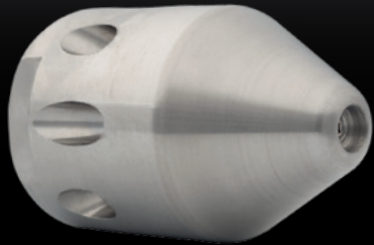


 Ceramic inserts

Optional front jet



**VAMPIRE 1"**



**Thread:** 1"

**Pipe diameter:** 8" - 16" *(recommended)*

**Jets:** (R) 8 x M6 (15° - 30°) // (F) 1 x M6

**Waterflow:** from 48 gpm


**Dimensions:** 2" x 3"

**Weight:** 1.2 lbs

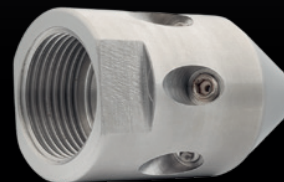
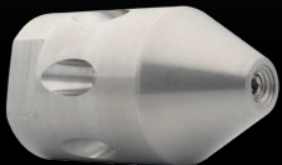
**Price:** **USD \$250.00**

The Vampire nozzle stands out for its ability to clean pipes thanks to its design with 35° rear jets, delivering extreme and efficient cleaning performance.



 *Ceramic inserts*

**VAMPIRE 3/4"**



**Thread:** 3/4"

**Pipe diameter:** 8" - 12" *(recommended)*

**Jets:** (R) 6 x M6 (7° - 30°) // (F) 1 x M6

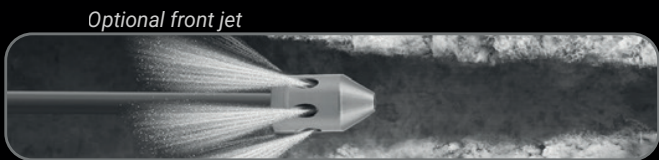
**Waterflow:** from 16 gpm


**Dimensions:** 1.3" x 2.3"

**Weight:** 0.5 lbs

**Price:** **USD \$145.00**

Especially useful for general cleaning tasks, removal of solid waste, soaps, and other blockages, it offers great flexibility for use in pipes of various diameters.



 *Ceramic inserts*

## 1" TANK CLEANING NOZZLE



**Thread:** 1"

**Dimensions:** 1" x 1" (body)

**Weight:** 10 lbs

**Price:** USD \$1,600.00

## 3/4" TANK CLEANING NOZZLE



**Thread:** 3/4"

**Dimensions:** 1" x 0.7" (body)

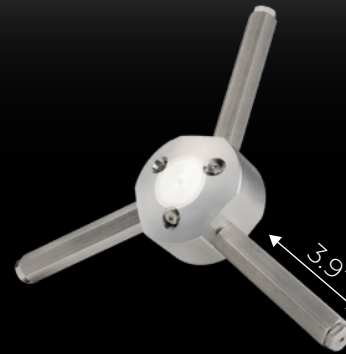
**Weight:** 5.2 lbs

**Price:** USD \$1,350.00

## HEAD



3 extension bar kit: USD \$135.00



**Weight:** 2 lbs

**Dimensions:** 6.7" x 2"

*Manual operation possible  
using only the cutting head*

**Price:** USD \$390.00



**1/2"**

**3/8"**

# DEEP CLEANING

ROOTS | LIMESCALE | SOAPS

## TARANTULA 80

**Thread:** 1/2" or 3/8"

**Pipe diameter:** 6" - 12" (recommended)

**Jets:** (R) 2 x M8 (25°) // (F) 1 x M8 (15°)

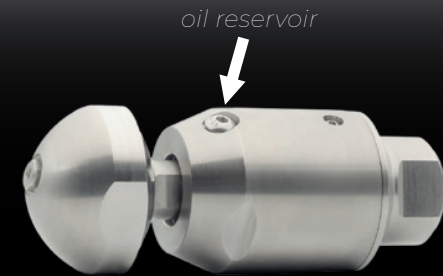
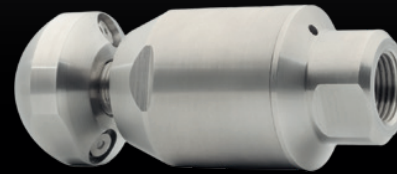
**Waterflow:** from 18 gpm

**Dimensions:** 1.9" x 4.9"

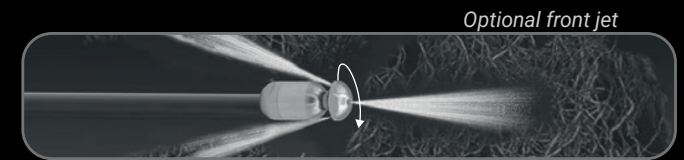
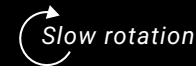
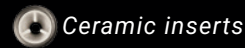
**Weight:** 2.2 lbs

**Price:** USD \$950.00

Forget about maintenance for a long time. This model has a long service life thanks to the additional adjustable oil reservoir.



oil reservoir



## MAINTENANCE KIT

1. O-ring
2. Shaft Seal
3. Bearing
4. Dispensing Syringe with sealing washers
5. Adhesive
6. High pressure seal & Brass seat
7. Grease Fitting & Sealing Washer
8. Viscous Fluid

**Price:** USD \$90.00



**TARANTULA 1/2"**



**Thread:** 1/2" or 3/8"

**Pipe diameter:** 4" - 10" (recommended)

**Jets:** (R) 2 x M6 (25°) // (F) 1 x M4 (15°)

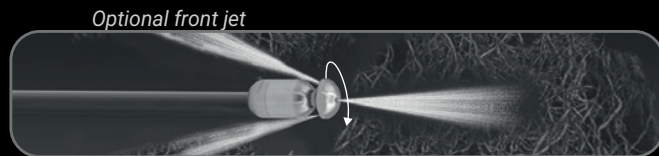
**Waterflow:** from 10 gpm


**Dimensions:** 1.5" x 3.7"


**Weight:** 1 lbs

**Price: USD \$850.00**

Slow-rotation nozzle, focuses the machine's flow into 2 rear jets that spin slowly. Able to cut roots or any kind of hard sediment. This model comes with a port for direct access to an **additional oil reservoir** for easy care, prolonging its service life and reducing maintenance needs.



 Ceramic inserts

 Slow rotation

**MAINTENANCE KIT**



**1.** Viscous Fluid

**2.** Grease Fitting & Sealing Washer

**3.** Adhesive

**4.** High pressure seal & Brass seat

**5.** Dispensing Syringe with sealing washers

**6.** Bearing

**7.** Sealing Ring

**8.** Shaft Seal

**9.** O-Ring

**Price: USD \$85.00**

# DEEP CLEANING

ROOTS | LIMESCALE | SOAPS | GREASE

## TARANTULA 3/8"

**Thread:** 3/8" or 1/4"

**Pipe diameter:** 3" - 10" (recommended)

**Jets:** (R) 2 x M4 (25°)

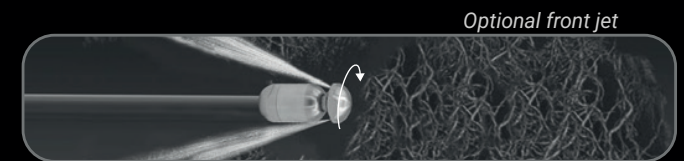
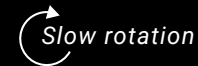
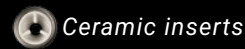
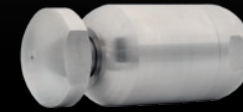
**Waterflow:** from 8 gpm

**Dimensions:** 1.1" x 2.6"

**Weight:** 0.4 lbs

Price: **USD \$485.00**

Slow-rotating nozzle that focuses the flow into 2 rear jets spinning at low speed, capable of cutting roots or any kind of hard sediment.



## MAINTENANCE KIT

1. O-Ring
2. Sealing Ring
3. Shaft Seal
4. Bearing
5. Dispensing Syringe
6. High pressure seal & Brass seat
7. Adhesive
8. Viscous Fluid

Price: **USD \$80.00**



**BREAKER 1/2"**



**Thread:** 1/2"

**Pipe diameter:** 3" - 8" (recommended)

**Jets:** (R) 3 x M6 (25°) // (F) 3 x M4 (15°) + 1 x M4

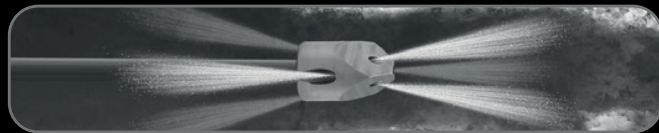
**Waterflow:** from 10 gpm


**Dimensions:** 1.4" x 2.2"

**Weight:** 0.4 lbs

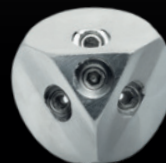
**Price:** USD \$185.00

Nozzle designed with powerful front jets capable of clearing the toughest blockages.



 Ceramic inserts

**BREAKER 3/8"**



**Thread:** 3/8"

**Pipe diameter:** 3" - 6" (recommended)

**Jets:** (R) 3 x M4 (25°) // (F) 3 x M4 (15°) + 1 x M4

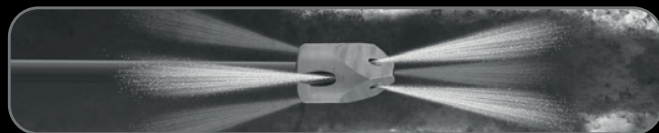
**Waterflow:** from 8 gpm


**Dimensions:** 1" x 1.7"

**Weight:** 0.18 lbs

**Price:** USD \$145.00

3/8" version of the classic Breaker nozzle; its compact size allows it to reach the tightest spots with its original power. Ideal for precision work in narrow or hard-to-reach areas.



 Ceramic inserts

ALIEN TURBO 1/2"

**Thread:** 1/2" or 3/8"

**Pipe diameter:** 6" - 18" (recommended)

**Jets:** (R) 3 x M6 (7°) + 1 rotating front jet (20°)

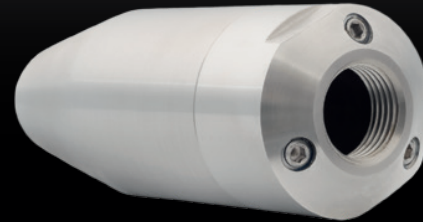
**Waterflow:** from 10 gpm


**Dimensions:** 1.8" x 4.9"

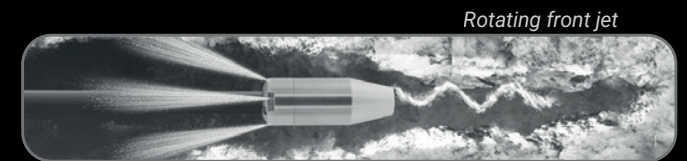
**Weight:** 2 lbs

**Price:** USD \$450.00

Designed for cleaning and unblocking pipes, especially where the removal of difficult blockages and obstructions is required.



 Ceramic inserts



MAINTENANCE KIT

1. Front plate

2. Jet Cartridge

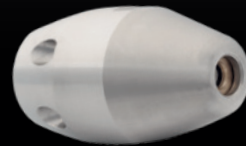
3. Small O-ring

4. Large O-ring

Price: USD \$150.00



ALIEN 1/2"



**Thread:** 1/2" or 3/8"

**Pipe diameter:** 3" - 8" (recommended)

**Jets:** (R) 6 x M4 (15°) + 1 rotating front jet (20°)

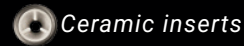
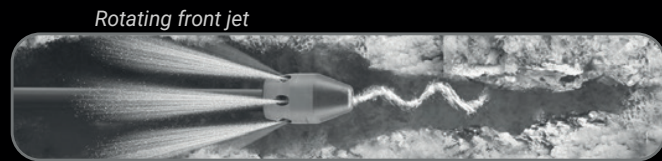
**Waterflow:** from 10 gpm

**Dimensions:** 1.3" x 2.2"

**Weight:** 0.4 lbs

**Price:** USD \$280.00

Its conical shape and rotating front jet allow it to drill and advance quickly, providing a complete and effective unblocking.



MAINTENANCE KIT



1. Rear cap

2. Jet

3. Jet Housing

4. Front plate

**Price:** USD \$120.00

# BOTTOM CLEANING

DIRT | SAND | GRAVEL

## HEAVY FLOUNDER 1/2"

**Thread:** 1/2" or 3/8"

**Pipe diameter:** 6" - 24" (recommended)

**Jets:** (R) 4 x M6 (5°)

**Waterflow:** from 21 gpm

**Dimensions:** 3.5" x 5.9" // 3.5" x 9.4" (w/swivel)

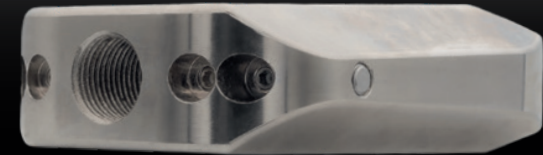
**Weight:** 6.2 lbs // 7 lbs (w/thread)


Price: **USD \$505.00**

Nozzles with low-slope rear jets to carry away all types of sediment, such as gravel, stones or debris.



SWIVEL FITTING INCLUDED



 Ceramic inserts



## LIGHT FLOUNDER 1/2"

**Thread:** 1/2" or 3/8"

**Pipe diameter:** 6" - 16" (recommended)

**Jets:** (R) 4 x M6 (5°)

**Waterflow:** from 10 gpm

**Dimensions:** 3.5" x 5.9" // 3.5" x 9.4" (w/swivel)

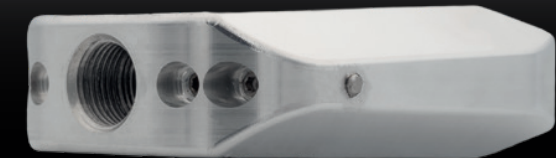
**Weight:** 2 lbs // 2.9 lbs (w/thread)


Price: **USD \$360.00**

The aluminium construction of this nozzle provides a weight reduction of 4.4 lbs compared to its steel counterpart, giving a higher travel speed.



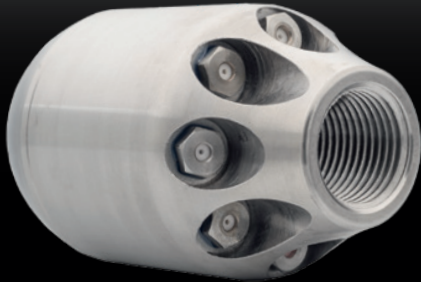
SWIVEL FITTING INCLUDED



 Ceramic inserts



## GRENADE 50



**Thread:** 1/2" or 3/8"

**Pipe diameter:** 6" - 16" (*recommended*)

**Jets:** (R) 8 x M8 (7° - 15°)

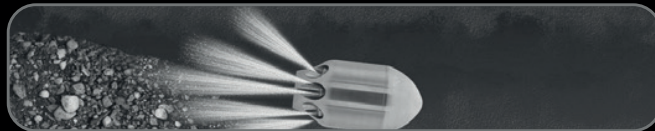
**Waterflow:** from 10 gpm


**Dimensions:** 2" x 3.7"

**Weight:** 1.6 lbs

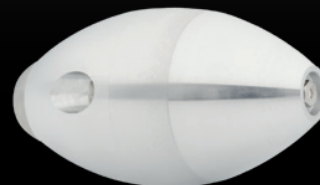
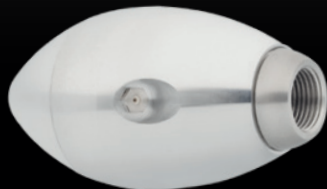
Price: **USD \$315.00**

Nozzles with low-slope rear jets to carry away all types of sediment, such as gravel, stones or debris.



 *Ceramic inserts*

## LYNX 1/2"



**Thread:** 1/2" or 3/8"

**Pipe diameter:** 6" - 16" (*recommended*)

**Jets:** (R) 3 x M8 (7° o 25°) // (F) 1 x M8

**Waterflow:** from 10 gpm

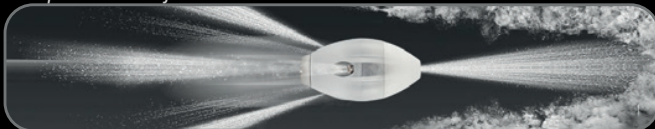
**Dimensions:** 2.5" x 4.7"


**Weight:** 1.3 lbs

Price: **USD \$265.00**

Our Lynx is a lightweight nozzle designed for long distance and bottom cleaning, made of aluminium.

*Optional front jet*



 *Ceramic inserts*

# ROOT CUTTERS

## ROOT-CUTTER 1/2"

**Thread:** 1/2" or 3/8"

**Pipe diameter:** 3" - 8" (recommended)

**Jets:** (R) 6 x M4 (10°) // (F) 3 x M4

**Waterflow:** from 10 gpm


**Dimensions:** 1.4" x 2.8"

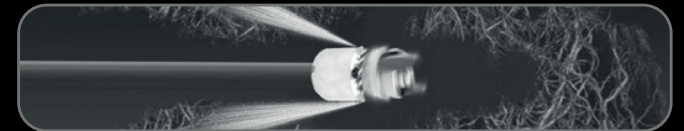
**Weight:** 0.7 lbs

**Price:** **USD \$475.00**

It stands out for its ability to cut and remove roots inside pipes. With use, the blades may wear out but are easily replaceable.



 **Ceramic inserts**



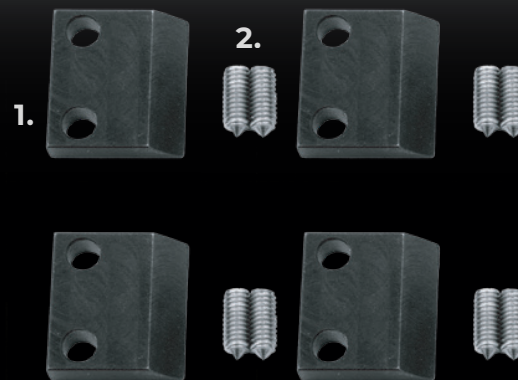
## SET OF REPLACEMENT BLADES

**1.** Blade

**2.** Screws

**Price:** **USD \$50.00**

Set of 4 blades and 8 screws for the root cutter 1/2" nozzle. The blades are made of hardened steel.



## LIGHT VIBRATING 1/2"



**Thread:** 1/2" or 3/8"

**Pipe diameter:** 3" - 8" (recommended)

**Jets:** (R) 6 x M4 (10°) // (F) 3 x M4

**Waterflow:** from 10 gpm


**Dimensions:** 1.4" x 2.7"

**Weight:** 0.7 lbs

**Price: USD \$405.00**

Designed to generate powerful vibration, ideal for tough jobs like removing cement and lime scale deposits.



 *Ceramic inserts*

# CLEANING & UNBLOCKING

## BUTTON 1/2"

**Thread:** 1/2" or 3/8"

**Pipe diameter:** 3" - 6" (recommended)

**Jets:** (R) 6 x M4 (15°) // (F) 1 x M4

**Waterflow:** from 10 gpm


**Dimensions:** 1.4" x 1.2"

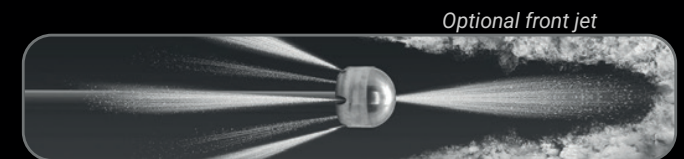
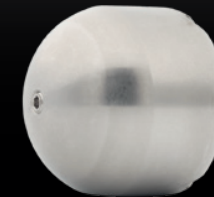
**Weight:** 0.2 lbs

Price: **USD \$135.00**

Nozzles for daily use for basic unblocking, notable for their small size and high functionality.



 Ceramic inserts



## B R U N A 1 / 2 "

**Thread:** 1/2" or 3/8"

**Pipe diameter:** 3" - 6" (recommended)

**Jets:** (R) 6 drilled jets (15°) // (F) 1 drilled one

**Waterflow:** from 10 gpm

**Dimensions:** 1.4" x 1.6"

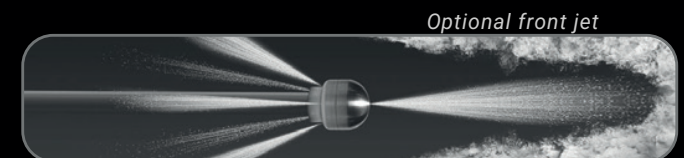
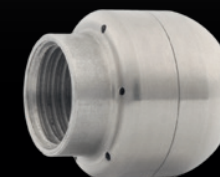
**Weight:** 0.3 lbs

Price: **USD \$70.00**

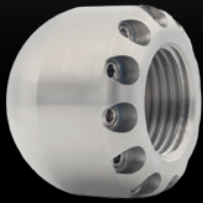
Everyday nozzles for basic unblocking.



Drilled jets



**BUTTON 1/2" 12 JETS**



**Thread:** 1/2" or 3/8"

**Pipe diameter:** 3" - 8" (recommended)

**Jets:** (R) 12 x M4 (15°) // (F) 1 x M4

**Waterflow:** from 26 gpm

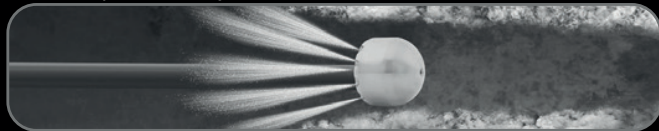
**Dimensions:** 1.4" x 1.2"


**Weight:** 0.2 lbs

Price: **USD \$150.00**

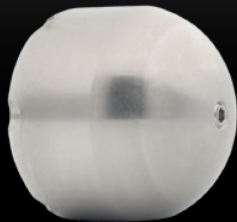
Equipped with 12 jets, this nozzle delivers comprehensive cleaning of all internal surfaces and hard-to-reach areas within the pipe.

Optional front jet



 Ceramic inserts

**BUTTON 1/2" MIXED**



**Thread:** 1/2" or 3/8"

**Pipe diameter:** 3" - 6" (recommended)

**Jets:** (T) 6 x M4 (7° - 15°) // (D) 1 x M4

**Waterflow:** from 10 gpm

**Dimensions:** 1.4" x 1.6"


**Weight:** 0.2 lbs

Price: **USD \$135.00**

The mixed nozzle combines jets set at various angles, offering enhanced versatility for a wide range of cleaning applications.

Optional front jet



 Ceramic inserts

# CLEANING & UNBLOCKING

## GRADES 30° 6 JETS

**Thread:** 1/2" or 3/8"

**Pipe diameter:** 3" - 10" (recommended)

**Jets:** (R) 6 x M6 (30°) // (F) 1 x M6

**Waterflow:** from 10 gpm

**Dimensions:** 2" x 2"

**Weight:** 0.66 lbs

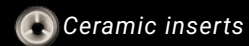
Price: **USD \$135.00**

Nozzles with rear jets at 30° angles for effective pipe cleaning.

Model with 3 rear jets available.



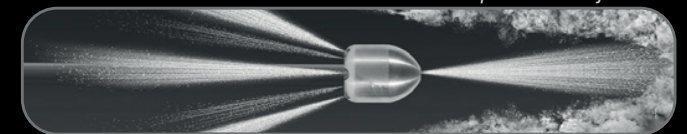
For cleaning



Ceramic inserts



Optional front jet



## GRADES 7° 6 JETS

**Thread:** 1/2" or 3/8"

**Pipe diameter:** 3" - 10" (recommended)

**Jets:** (R) 6 x M6 (7°) // (F) 1 x M6

**Waterflow:** from 10 gpm

**Dimensions:** 1.6" x 2"

**Weight:** 0.7 lbs

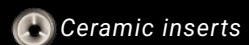
Price: **USD \$135.00**

Nozzles with rear jets at 30° angles for effective pipe cleaning.

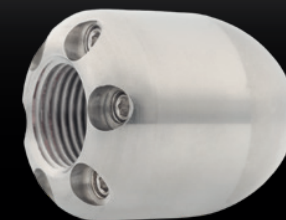
Model with 3 rear jets available.



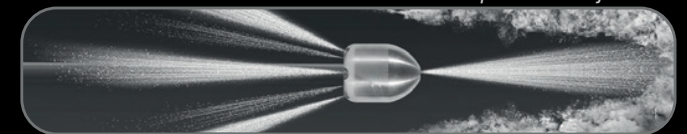
For unclogging



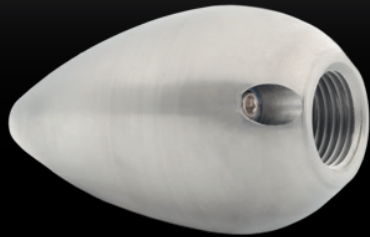
Ceramic inserts



Optional front jet



**BULLET 1/2"**



**Thread:** 1/2" or 3/8"

**Pipe diameter:** 4" - 8" (recommended)

**Jets:** (R) 3 x M6 (7°) // (F) 1 x M6

**Waterflow:** from 10 gpm

**Dimensions:** 1.9" x 3.2"

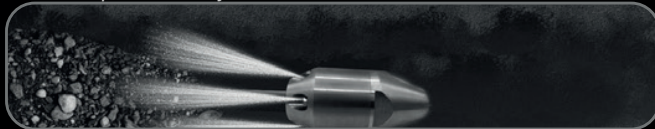
**Weight:** 1.3 lbs


Price: **USD \$190.00**

Known for its ability to cover long distances and its high functionality.  
Model with 6 rear jets available.

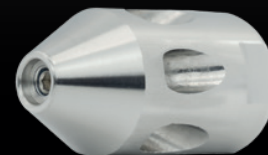
\*Also available with 6 rear jets (R) 6 x M6 (7°)

Optional front jet



 Ceramic inserts

**VAMPIRE 1/2"**



**Thread:** 1/2" or 3/8"

**Pipe diameter:** 4" - 8" (recommended)

**Jets:** (R) 6 x M6 (25°) // (F) 1 x M6

**Waterflow:** from 10 gpm

**Dimensions:** 1.1" x 2"


**Weight:** 0.3 lbs

Price: **USD \$125.00**

Nozzles with rear jets at different angles for effective pipe cleaning. Ideal for general cleaning, soaps, grease, and all common maintenance tasks.

Optional front jet



 Ceramic inserts

## ROTATING WIPE CATCHER 1/2"

**Thread:** 1/2" or 3/8"

**Pipe diameter:** 3" - 8" (recommended)

**Jets:** (R) 6 x M4 (10°) // (F) 3 x M4

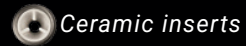
**Waterflow:** from 10 gpm

**Dimensions:** 1.4" x 2.6"

**Weight:** 0.6 lbs

Price: **USD \$420.00**

Using its rotating turbine, it effectively hooks and removes rags and other textile waste from pipes.



## BASIC WIPE-CATCHER 1/2"

**Thread:** 1/2" or 3/8

**Pipe diameter:** 3" - 8" (recommended)

**Jets:** (R) 6 x M4 (15°) // (F) 1 x M4

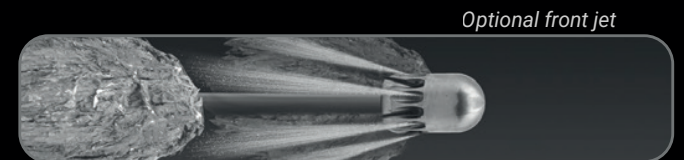
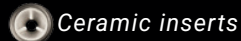
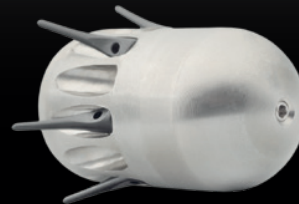
**Waterflow:** from 10 gpm

**Dimensions:** 1.2" x 2"

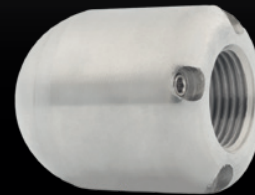
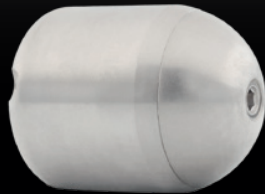
**Weight:** 0.3 lbs

Price: **USD \$235.00**

Specifically designed to hook and remove rags and other textile waste from pipes, the Wipe-Catcher nozzle stands out for its efficiency and ease of use.



**TIGER 3/8"**



**Thread:** 3/8"

**Pipe diameter:** 2" - 6" (recommended)

**Jets:** (R) 4 x M4 (15°) // (F) 1 x M6

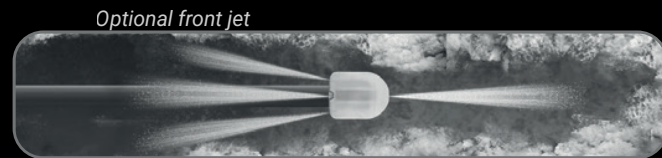
**Waterflow:** from 8 gpm


**Dimensions:** 1.1" x 1.5"

**Weight:** 0.3 lbs

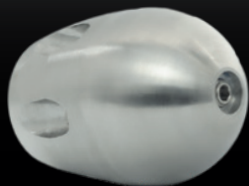
**Price: USD \$125.00**

The tiger nozzle is ideal for unclogging; its shape and size allow it to penetrate and reach the farthest corners of the pipe.



 Ceramic inserts

**BASIC 3/8"**



**Thread:** 3/8" or 1/4"

**Pipe diameter:** 2" - 6" (recommended)

**Jets:** (R) 6 x M4 (15°) // (F) 1 x M4

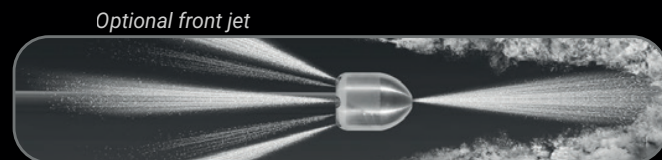
**Waterflow:** from 8 gpm


**Dimensions:** 1" x 1.4"

**Weight:** 0.2 lbs

**Price: USD \$115.00**

Compact version of the successful Basic nozzle, perfect for smaller pipelines and equipment, while maintaining the effective design of its larger counterpart.



 Ceramic inserts

**ANACONDA** *THE BIG ONE*

**Thread:** 1/2" or 3/8"

**Pipe diameter:** 4" - 16" *(recommended)*

**Jets:** (R) 3 x M6 (15°) // (S) 1 x M6 (90°)

**Waterflow:** from 10 gpm


**Dimensions:** 1.6" x 2.6"

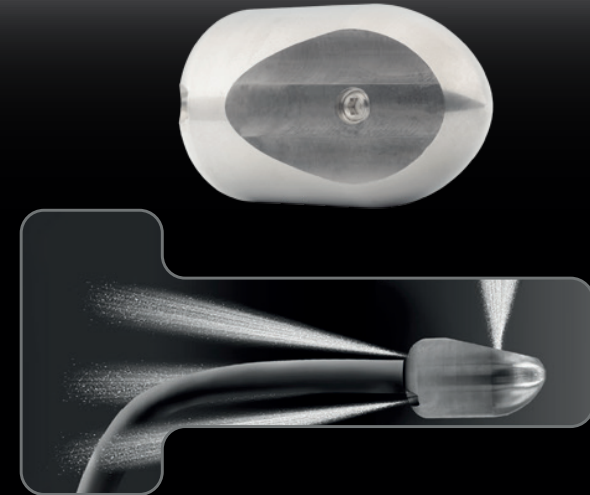
**Weight:** 0.8 lbs

Price: **USD \$185.00**

Designed to rotate inside inspection chambers using its side jet.



 *Ceramic inserts*



**ANACONDA** *THE SMALL ONE*

**Thread:** 1/2" or 3/8"

**Pipe diameter:** 3" - 6" *(recommended)*

**Jets:** (R) 6 x M4 (15°) // (S) 1 x M4 (90°) // (F) 1 x M4

**Waterflow:** from 10 gpm


**Dimensions:** 1.4" x 1.2"

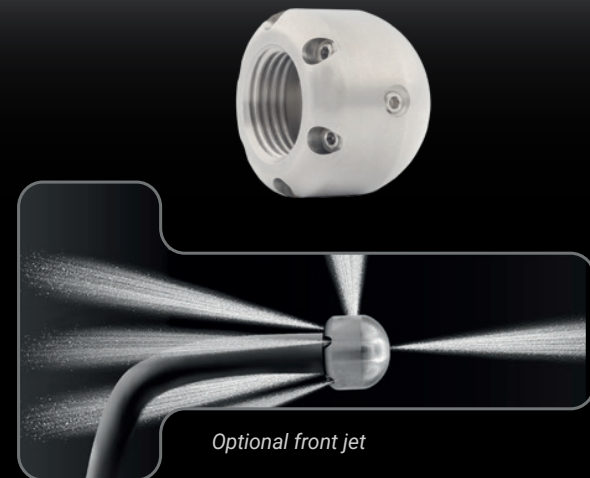
**Weight:** 0.2 lbs

Price: **USD \$135.00**

Known for its versatility and functionality, it features a side jet that allows quick and easy direction changes to navigate pipe bends.

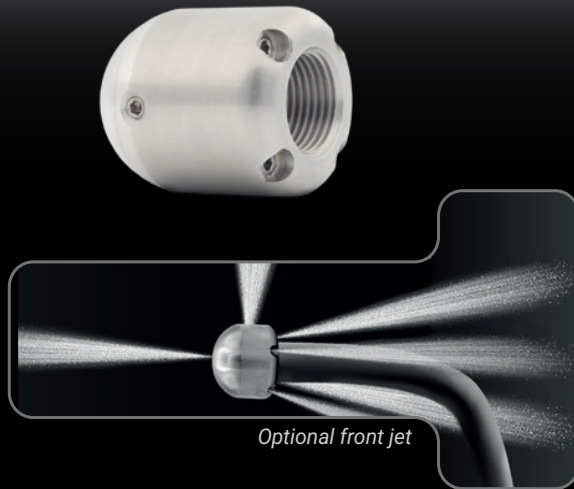



 *Ceramic inserts*



*Optional front jet*

## ANACONDA 3/8"



 Ceramic inserts

**Thread:** 3/8" or 1/4"

**Pipe diameter:** 4" - 6" (recommended)

**Jets:** (R) 4 x M4 (15°) // (S) 1 x M4 (90°) // (F) 1 x M6

**Waterflow:** from 8 gpm

**Dimensions:** 1.2" x 1.5"


**Weight:** 0.3 lbs

**Price: USD \$125.00**

It stands out for its versatility and functionality, with a side jet that allows you to change direction and pass pipe bends quickly and easily.

## CAMERA NOZZLE 1/2"



 Ceramic inserts

**Thread:** 1/2" or 3/8"

**Pipe diameter:** 3" - 20" (recommended)

**Jets:** (R) 3 x M4 (15°)

**Waterflow:** from 10 gpm

**Dimensions:** 1.4" x 2.4"

**Weight:** 0.5 lbs

**Price: USD \$250.00**

Designed for easy pushing and handling of the camera head in manual pipe inspections.

## TANK CLEANER 1/2"



**Thread:** 1/2"

**Dimensions:** 9" x 6" (body)

**Weight:** 3.7 lbs

**Price:** USD \$985.00

## HEAD



**Weight:** 2 lbs

**Dimensions:** 6.7" x 2"

*Manual operation possible  
using only the cutting head*

**Price:** USD \$390.00



3 extension bar kit: USD \$135.00



**1/4"**

**1/8"**

# DEEP UNBLOCKING

## ALIEN 1/4"

**Thread:** 1/4" or 1/8"

**Pipe diameter:** 2" - 6" (recommended)

**Jets:** (R) 3 drilled holes (15°) // 1 rotating front jet (20°)

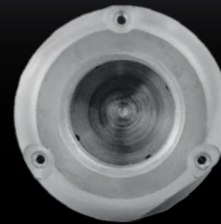
**Waterflow:** from 8 gpm

**Dimensions:** 0.9" x 1.6"

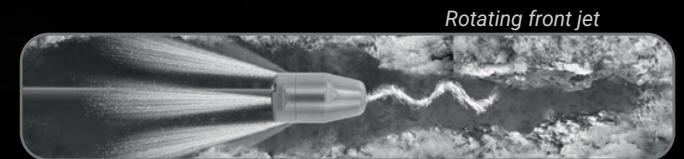
**Weight:** 0.3 lbs

**Price: USD \$250.00**

Its conical shape and rotating front jet allow it to drill and advance quickly, providing a complete and effective unblocking.



*Drilled jets*



## MAINTENANCE KIT

**1.** Ceramic Ring

**2.** Jet Insert

**3.** O-Ring

**Price: USD \$115.00**



**1.**

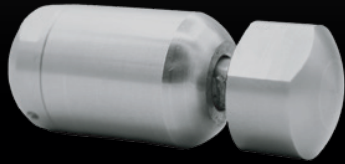


**2.**



**3.**

**TARANTULA 1/4"**



**Thread:** 1/4" or 1/8"

**Pipe diameter:** 3" - 6" (recommended)

**Jets:** (R) 4 x M4 (25°)

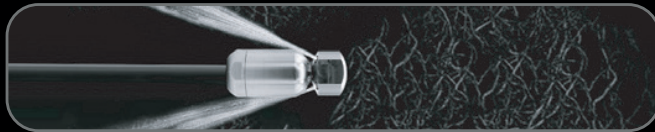
**Waterflow:** from 8 gpm


**Dimensions:** 1.1" x 2.5"


**Weight:** 0.4 lbs

**Price:** USD \$450.00

Thanks to its automatically rotating dual-jet head, it provides extreme cleaning and cutting of any roots it encounters.



 Ceramic inserts

 Slow rotation

**MAINTENANCE KIT**



**1.** O-Ring

**2.** Sealing Ring

**3.** Shaft Seal

**4.** Bearing

**5.** Dispensing Syringe

**6.** High pressure seal & Brass seat

**7.** Adhesive

**8.** Viscous Fluid

**Price:** USD \$80.00

# CLEANING & UNBLOCKING

## BREAKER 1/4"

**Thread:** 1/4"

**Pipe diameter:** 2" - 6" (recommended)

**Jets:** (R) 6 x M4 (7°) // (F) 3 x M4 (15°)

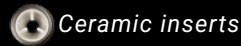
**Waterflow:** from 8 gpm

**Dimensions:** 1" x 1.2"

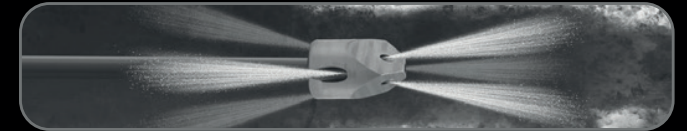
**Weight:** 0.2 lbs

Price: **USD \$140.00**

Our Breaker is distinguished by its ability to unblock pipes thanks to its head with three front jets, providing extreme and efficient cleaning.



Ceramic inserts



## TIGER 1/4"

**Thread:** 1/4" or 1/8"

**Pipe diameter:** 2" - 6" (recommended)

**Jets:** (R) 6 x M4 (7°) // (F) 1 x M4

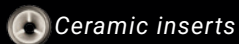
**Waterflow:** from 8 gpm

**Dimensions:** 1" x 1"

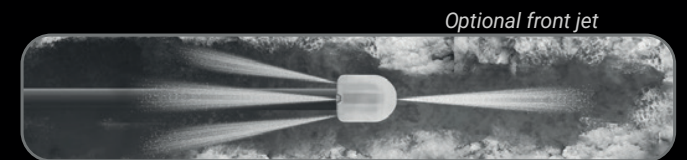
**Weight:** 0.1 lbs

Price: **USD \$125.00**

It stands out for its high thrust and small dimensions, allowing it to pass through elbows and small pipes.



Ceramic inserts



BASIC 1/4"



**Thread:** 1/4" or 1/8"

**Pipe diameter:** 2" - 6" (recommended)

**Jets:** (R) 6 drilled jets (15°) // (F) 1 x M4

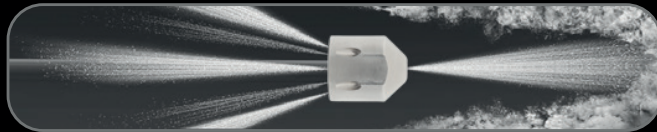
**Waterflow:** from 8 gpm

**Dimensions:** 0.7" x 0.8"

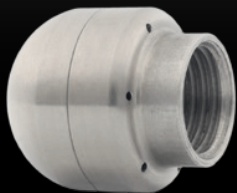
**Weight:** 0.03 lbs

Price: **USD \$65.00**

Nozzle designed for unblocking and cleaning pipes in confined spaces. Its compact design allows access to narrower and more difficult areas of pipes.



BRUNA 1/4"



**Thread:** 1/4" or 1/8"

**Pipe diameter:** 2" - 6" (recommended)

**Jets:** (R) 6 drilled jets (15°) // (F) 1 optional drilled jet

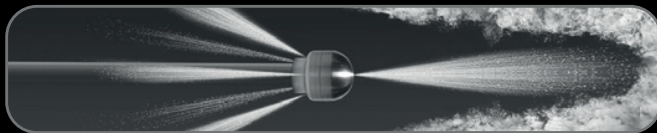
**Waterflow:** from 8 gpm

**Dimensions:** 0.8" x 0.9"

**Weight:** 0.05 lbs

Price: **USD \$65.00**

Our Bruna 1/4" nozzle is ideal for companies looking for an economical and powerful nozzle, made in two parts for water channelling and with a very affordable price.



Drilled jets

## ROTATING WIPE CATCHER 1/4"

**Thread:** 1/4" or 1/8"

**Pipe diameter:** 2" - 6" (recommended)

**Jets:** (R) 6 x M4 (10°) // (F) 3 x M4

**Waterflow:** from 8 gpm


**Dimensions:** 1.1" x 2.2"

**Weight:** 0.3 lbs

Price: **USD \$400.00**

The 1/4" Rotating Wipe Catcher features a rotating turbine which catches the rags when pulling backwards and can remove textile and other debris from the pipe.



 Ceramic inserts



## ANACONDA 1/4"

**Thread:** 1/4"

**Pipe diameter:** 2" - 6" (recommended)

**Jets:** (R) 6 x M4 (7°) // (S) 1 x M4 (90°) // (F) 1 x M4

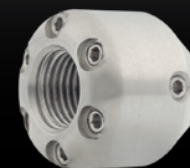
**Waterflow:** from 8 gpm


**Dimensions:** 1" x 1"

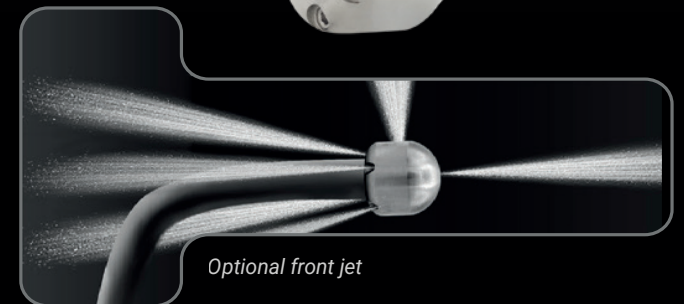
**Weight:** 0.1 lbs

Price: **USD \$125.00**

Its compact design makes it easy to pass through bends and bifurcations, minimising wear and tear and the need for maintenance, providing a reliable and durable cleaning solution.



 Ceramic inserts



## MINI VIBRATING 1/4"



**Thread:** 1/4" or 1/8"

**Pipe diameter:** 2" - 6" (recommended)

**Jets:** (R) 6 x M4 (10°) // (F) 3 x M4

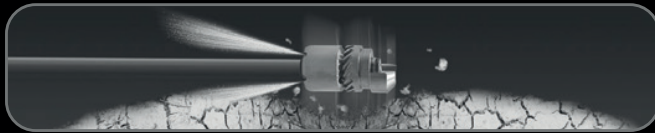
**Waterflow:** from 8 gpm

**Dimensions:** 1.1" x 2.1"

**Weight:** 0.4 lbs

Price: **USD \$350.00**

Designed to generate a powerful vibration, ideal for tough jobs such as removing cement and limescale deposits.



# 1 / 8 " N O Z Z L E S

## K-TURBO 1/8" 6 JETS

**Thread:** 1/8"

**Pipe diameter:** 2" - 6" (recommended)

**Jets:** (R) 6 x M4 (15°) // (F) 1 optional drilled jet

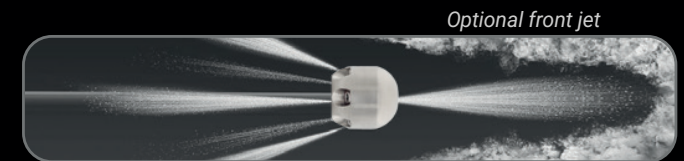
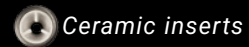
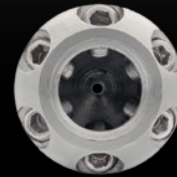
**Waterflow:** from 6 gpm

**Dimensions:** 0.7" x 0.7"

**Weight:** 0.04 lbs

**Price:** USD \$95.00

It is particularly useful for general cleaning and debris removal work on small diameter pipes.



## K-TURBO 1/8" 3 JETS

**Thread:** 1/8"

**Pipe diameter:** 1" - 3" (recommended)

**Jets:** (R) 3 drilled jets (15°) // (F) 1 optional drilled jet

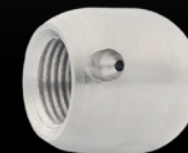
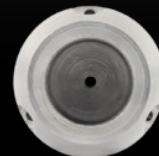
**Waterflow:** from 6 gpm

**Dimensions:** 0.6" x 0.7"

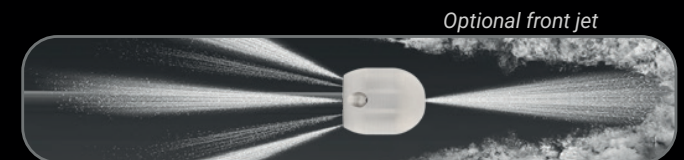
**Weight:** 0.03 lbs

**Price:** USD \$50.00

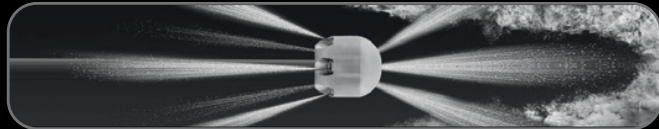
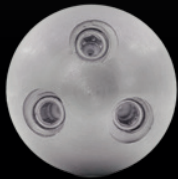
Its compact design, rear and front jets make it an indispensable tool for pipe cleaning jobs in sinks and other applications.




Drilled jets



**BREAKER 1/8"**



 Ceramic inserts

**Thread:** 1/8"

**Pipe diameter:** 2" - 4" (recommended)

**Jets:** (R) 6 x M4 (15°) // (F) 3 x M8 (15°)

**Waterflow:** from 6 gpm

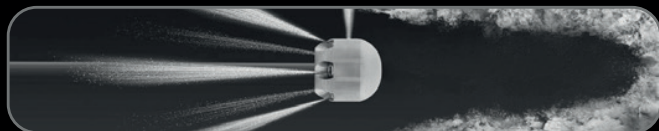
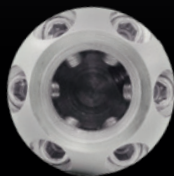
**Dimensions:** 0.7" x 0.7"


**Weight:** 0.04 lbs

**Price:** USD \$140.00

Our Breaker is distinguished by its ability to unblock pipes thanks to its head with three front jets, providing extreme cleaning.

**ANACONDA 1/8"**



 Ceramic inserts

**Thread:** 1/8"

**Pipe diameter:** 2" - 4" (recommended)

**Jets:** (R) 6 x M4 (15°) // (S) 1 x M4 (90°)

**Waterflow:** from 6 gpm

**Dimensions:** 0.7" x 0.7"

**Weight:** 0.04 lbs

**Price:** USD \$95.00

Designed for professional use in compact pipelines, this configuration combines strong rear propulsion with a lateral jet that improves directional control inside bends, elbows, and junctions.

## CAMERA NOZZLE 1/4"

**Thread:** 1/4" or 1/8"

**Pipe diameter:** 2" - 6" (recommended)

**Jets:** (R) 3 x M6 (15°)

**Waterflow:** from 8 gpm


**Dimensions:** 1.3" x 1.5"

**Weight:** 0.3 lbs

Price: **USD \$205.00**

Designed for easy pushing and handling of the camera head in manual pipe inspections.



 Ceramic inserts



## TURBOROTATING

**Thread:** 1/4"

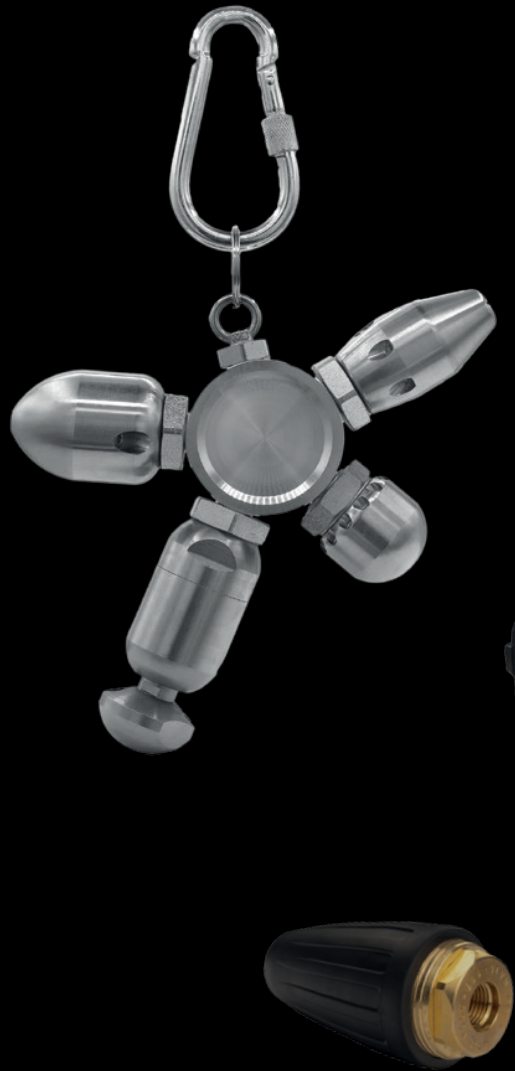
**Dimensions:** 41 x 84 mm

**Weight:** 0.59 lbs (266 gr)

Adaptable to all other sizes

Price: **USD \$210.00**





## OTHER PRODUCTS



NOZZLE HOLDER

**Dimensions:** 1" x 2"

**Weight:** 0.81 lbs

Designed to be attached to your work belt for quick access to your 4 favourite nozzles, you can have nozzles at your fingertips to suit the needs of the job, quickly and efficiently.

Available for 1/2" | 3/8" | 1/4" | 1/8" nozzles and with the possibility to combine all of them in mixed form on the same key ring.

**Price: USD \$90.00**



FLEX HOSES

**Hose:** 1/4"

**Thread:** 1/8"

**Pipes:** from 1" to 6"

33 ft: **USD \$235.00**

49 ft: **USD \$330.00**

66 ft: **USD \$430.00**

98 ft: **USD \$650.00**

164 ft: **USD \$1,200.00**

Nozzles are not included.



# OTHER PRODUCTS

## ANTI-RETURN BAR



Thread:	1"	3/4"	1/2"
Weight:	1.9 lbs	1.3 lbs	0.5 lbs
Dimensions:	10.6" x 1.9"	10.4" x 1.6"	5" x 1.2"
Price:	\$135.00	\$125.00	\$115.00

*Bar to be placed between hose and nozzle*



## REEL

**Connection:** 1/2"

**Nozzle holder**

**Dimensions:** 11.8" x 11.8" x 11.8"

**Weight:** 8.8 lbs

**Price: USD \$410.00**

Flex hose not included.



---

## ⚠ **WARNING** ⚠

---

Operations with waterjetting equipment can be potentially hazardous. Caution **MUST** be exercised prior to and during machine and water jet tool use.

Please read and follow all of these instructions. Deviating from safety instructions and recommended practices can lead to severe injury and/or death.

The immediate work area **MUST** be marked off to keep out untrained persons.

Inspect the equipment for visible signs of deterioration, damage, and improper assembly. Do not operate if damaged, until repaired.

Make sure all threaded connections are tight and free of leaks.

Always de-energize the system before opening a door to service or replace any parts. Failure to do so can result in severe injury and/or death.

### **PRE-RUN SAFETY CHECK**

Install mechanical stops, stingers and backout preventers as appropriate when doing any tube, pipe or vessel cleaning.

Complete a job specific risk assessment and act on the resulting actions.

Ensure the waterjetting zone is properly barricaded and that warning signs are posted.

Ensure the work place is free of unnecessary objects (e.g. loose parts, hoses, tools).

Ensure all Operators are using the correct Personal Protective Equipment (PPE).

Check that the air hoses are properly connected and tight.

Check all hoses and accessories for damage prior to use. Do not use damaged items. Only high quality hoses intended for waterjetting applications should be used as high-pressure hoses.

Check all high-pressure threaded connections for tightness.

Operate the high-pressure water at full pressure and, if applicable, use the Pneumatic Foot Pedal Dump Control to verify that the dump valve is working properly.

Ensure that Operators never connect, disconnect, or tighten hoses, adapters, or accessories with the high-pressure water pump unit running.

Ensure no personnel are in the jetting zone.

### **PERSONAL PROTECTIVE EQUIPMENT**

Use of Personal Protective Equipment (PPE) is dependent on the working pressure of water and the cleaning application. Managers, Supervisors, and Operators **MUST** carry out a job specific risk assessment to define the exact requirements for PPE.

Hygiene—Operators are advised to wash thoroughly after all waterjetting operations to remove any waterblast residue which may contain traces of harmful substances.

First aid provision—users **MUST** be provided with suitable first aid facilities at the operation site.

#### **PPE MAY INCLUDE:**

Eye protection: Full face visor

Foot protection: Kevlar® brand or steel toe capped, waterproof, non-slip safety boots

Hand protection: Waterproof gloves

Head protection: Hard hat that accepts a full face visor and ear protection

Body protection: Multi-layer waterproof clothing approved for water jetting

Hose protection: Hose shroud

Respiratory protection: May be required; refer to job specific risk assessment

Bruna has designed and manufactured this equipment considering all hazards associated with its operation. Roberto Brunna assessed these risks and incorporated safety features in the design.

Bruna **WILL NOT** accept responsibility for the results of misuse.

**IT IS THE RESPONSIBILITY OF THE INSTALLER/OPERATOR** to conduct a job specific risk assessment prior to use. Job specific risk assessment **MUST** be repeated for each different set up, material, and location.

The risk assessment **MUST** conform to the Health and Safety at Work Act 1974 and other relevant Health and Safety legislation.

The risk assessment **MUST** consider potential material or substance hazards including: Aerosols, Biological and microbiological (viral or bacterial) agents, Combustible materials, Dusts, Explosion, Fibers, Flammable substances, Fluids, Fumes, Gases, Mists, Oxidizing Agents.

## Limited lifetime Warranty

Our products come with a lifetime warranty limited to manufacturing defects only. The warranty covers defects in materials or workmanship that occur under normal use.

This warranty does not cover:  
Damage caused by misuse, abuse, or negligence  
Unauthorized repairs or modifications  
Normal wear and tear

To make a warranty claim, proof of purchase is required, and the product must be inspected to confirm the issue is due to a manufacturing defect.



A high-contrast, black and white photograph of industrial machinery, likely a jetting nozzle assembly. The image is covered in numerous water droplets, suggesting a wet or high-pressure environment. The machinery features various components, including a large cylindrical part on the left and a more complex, multi-faceted part on the right. The background shows a textured surface with some embossed markings, including the word 'OPTIMIZED' and the number '1330'.

# BRUNA

NOZZLES

[info@jettingnozzles.com](mailto:info@jettingnozzles.com)  
[www.jettingnozzles.com](http://www.jettingnozzles.com)

**OFFICE: (305) 454-1125**