

BRUNA

2026 NOZZLES



INDEX

(1-1/4") (1") (3/4")

- 6** TARANTULA 1"
MAINTENANCE KIT
- 7** TARANTULA 3/4"
MAINTENANCE KIT
- 8** GRENADE 80
GRENADE 60
- 9** GRENADE 120
GRENADE 100
- 10** BULLET GRENADE 60
GRENADE 70
- 11** FLOUNDER 1"
FRANKENSTEIN
- 12** ALIEN 1"
MAINTENANCE KIT
- 13** ALIEN 3/4"
MAINTENANCE KIT
- 14** BREAKER 1"
BASIC 3/4"
- 15** VAMPIRE 1"
VAMPIRE 3/4"
- TANK CLEANER 1"
- 16** TANK CLEANER 3/4"
HEAD

(1/2") (3/8")

- 18** TARANTULA 80
MAINTENANCE KIT
- 19** TARANTULA 1/2"
MAINTENANCE KIT
- 20** TARANTULA 3/8"
MAINTENANCE KIT
- 21** BREAKER 1/2"
BREAKER 3/8"
- 22** ALIEN TURBO 1/2"
MAINTENANCE KIT
- 23** ALIEN 1/2"
MAINTENANCE KIT
- 24** HEAVY FLOUNDER 1/2"
LIGHT FLOUNDER 1/2"
- 25** GRENADE 50
LYNX 1/2"
- 26** ROOT-CUTTER 1/2"
- 27** HEAVY VIBRATING 1/2"
LIGHT VIBRATING 1/2"
- 28** BUTTON 1/2"
BRUNA 1/2"
- 29** BUTTON 1/2" 12 JETS
BUTTON 1/2" MIXED
- 30** GRADES 30° 6 JETS
GRADES 7° 6 JETS
- 31** BULLET 1/2"
VAMPIRE 1/2"
- 32** ROTATING WIPE CATCHER 1/2"
BASIC WIPE-CATCHER 1/2"
- 33** TIGER 3/8"
BASIC 3/8"
- 34** ANACONDA *the big one*
ANACONDA *the small one*
- 35** CAMERA NOZZLE 1/2"
ANACONDA 3/8"
- 36** TANK CLEANER 1/2"
HEAD

(1/4") (1/8")

- 38** ALIEN 1/4"
MAINTENANCE KIT
- 39** TARANTULA 1/4"
MAINTENANCE KIT
- 40** BREAKER 1/4"
TIGER 1/4"
- 41** BASIC 1/4"
BRUNA 1/4"
- 42** ROTATING WIPE CATCHER 1/4"
ANACONDA 1/4"
- 43** MINI VIBRATING 1/4"
ROOT-CUTTER 1/4"
- 44** K-TURBO 1/8" 6 JETS
K-TURBO 1/8" 3 JETS
- 45** BREAKER 1/8"
ANACONDA 1/8"
- 46** CAMERA NOZZLE 1/4"
TURBOROTATING

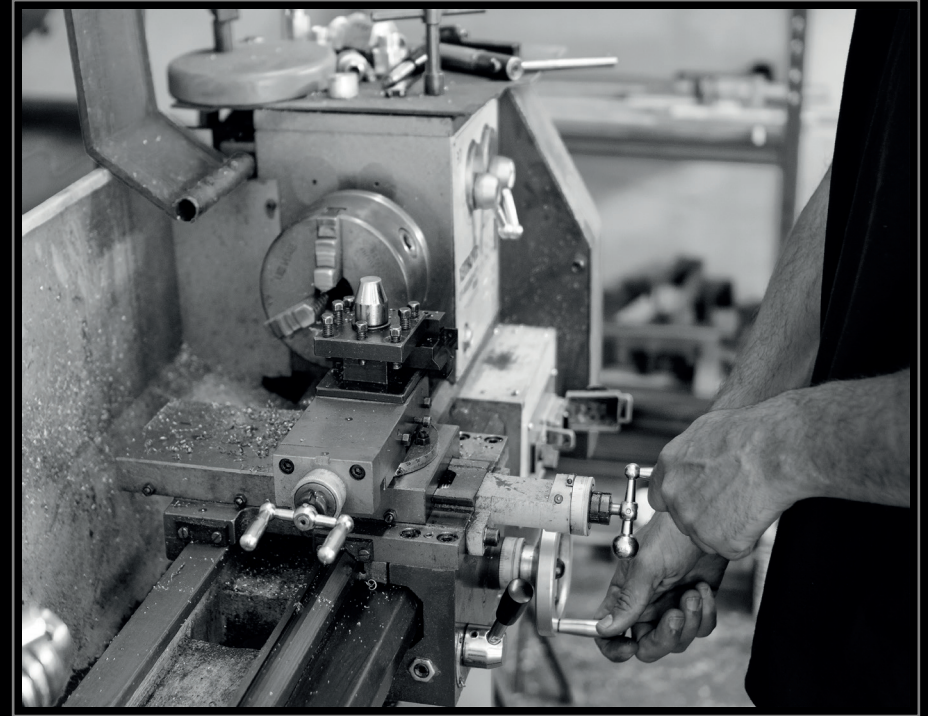
OTHER PRODUCTS

- 48-49** INSPECTION ROBOT
- 50** BRUNA TRANSMITTER NOZZLE
FLEX HOSES
- 51** NOZZLE HOLDER
- 52** ANTI-RETURN BAR
REEL

High-Performance Jetting Nozzles You Can Trust

We design and manufacture high-performance jetting nozzles for pipe and sewer cleaning. Each nozzle is precisely engineered and calibrated to match the pump output of jetters and vacuum trucks, ensuring maximum efficiency in cleaning and sewer rehabilitation.

Our nozzles are trusted by municipalities, environmental service providers, plumbing professionals, and specialized contractors across the industry. Whether for routine maintenance or rehabilitation projects, our solutions deliver the power, durability, and performance needed to get the job done.





1-1/4"

1"

3/4"

DEEP CLEANING

ROOTS | LIMESCALE | SOAPS | GREASE

TARANTULA 1"

Thread: (1" - 1/4") or 1" or 3/4"

Pipe diameter: 8" - 36" (recommended)

Jets: (R) 2 x M10 (25°) // (F) 1 x M10 (15°)

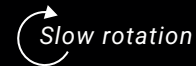
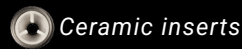
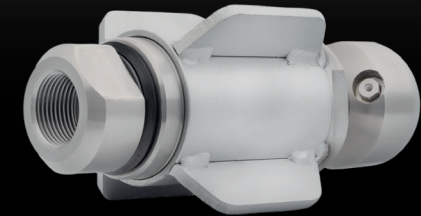
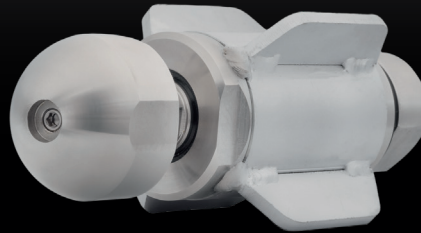
Waterflow: from 53 gpm

Dimensions: 4.7" x 8.6"

Weight: 9.5 lbs

Price: USD \$1,575.00

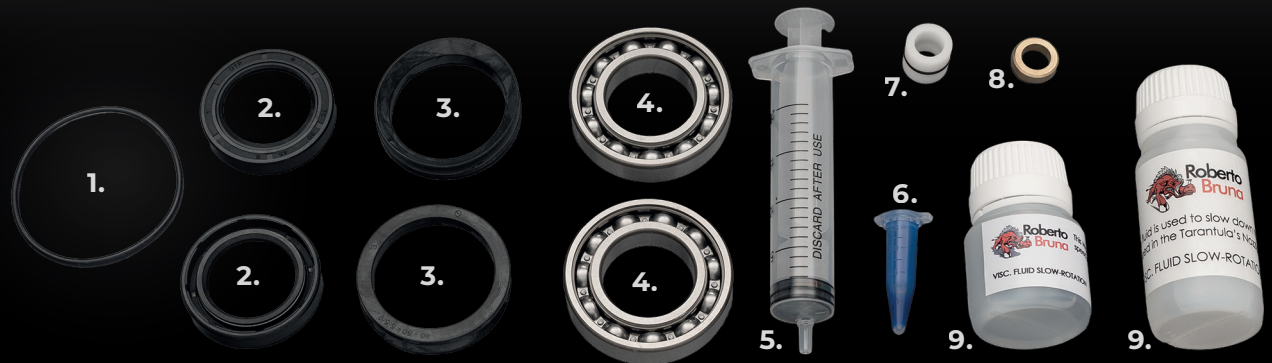
Designed for pipe maintenance, especially when the removal of roots obstructing pipes is required.



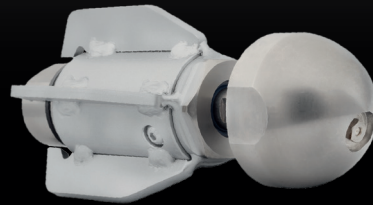
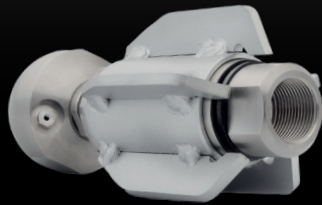
MAINTENANCE KIT

1. O-ring
2. Shaft Seal
3. Weep Seal
4. Bearing
5. Dispensing Syringe
6. Adhesive
7. High pressure seal
8. Brass seat
9. Viscous Fluid

Price: USD \$105.00



TARANTULA 3/4"



Thread: 3/4"

Pipe diameter: 8" - 16" (recommended)

Jets: (R) 2 x M8 (25°) // (F) 1 x M8 (15°)

Waterflow: from 26 gpm

Dimensions: 3.3" x 7.4"

Weight: 4.8 lbs

Price: USD \$1,155.00

Just like the 1" model, our 3/4" Tarantula stands out for its ability to cut and remove roots from inside pipes thanks to its head with two jets that spins automatically.



Ceramic inserts

Slow rotation

MAINTENANCE KIT



1. Viscous Fluid

2. Dispensing Syringe with sealing washers

3. Adhesive

4. Grease fitting

5. High pressure seal & Brass seat

6. Bearing

7. Shaft Seal

8. Weep Seal

9. O-ring

10. Wave Spring

Price: USD \$100.00

GENERAL CLEANING

GRENADE 80

Thread: 1" or 3/4"

Pipe diameter: 8" - 24" (recommended)

Jets: (R) 10 x M8 (30° - 10°) // (F) 1 x M8

Waterflow: from 42 gpm


Dimensions: 3.1" x 7"

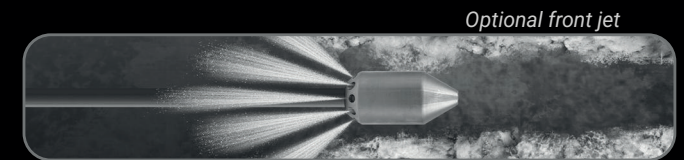
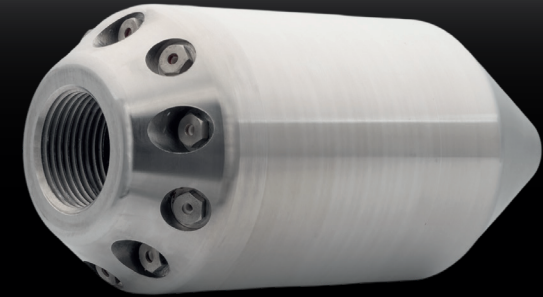
Weight: 7.9 lbs

Price: USD \$570.00

Known for its efficiency and functionality, with rear jets at 30° and 10° that ensure water reaches the pipe walls effectively for optimal cleaning performance.



 Ceramic inserts



GRENADE 60

Thread: 1" or 3/4"

Pipe diameter: 6" - 16" (recommended)

Jets: (R) 6 x M8 (30° - 10°) // (F) 1 x M8

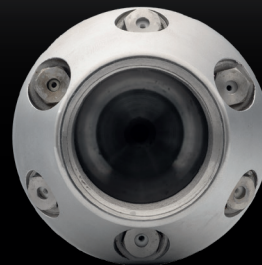
Waterflow: from 16 gpm


Dimensions: 2.3" x 4.3"

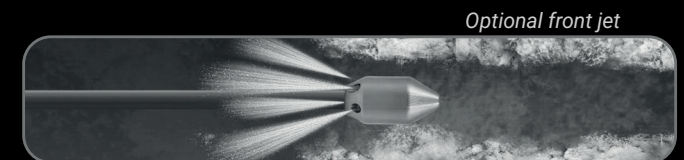
Weight: 2.6 lbs

Price: USD \$375.00

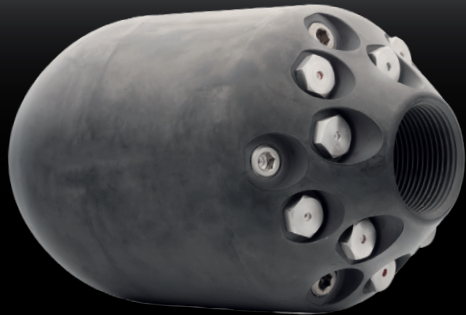
Nozzles with rear jets at different angles for general cleaning, removing soap, grease, and all kinds of common buildup inside the pipe system.



 Ceramic inserts



GRENADA 120



Thread: (1" - 1/4") or 1"

Pipe diameter: 10 - 48" (*recommended*)

Jets: (R) 15 x M13 (7° - 15° - 20°)

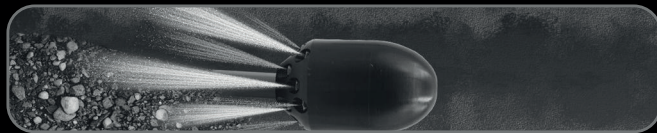
Waterflow: from 60 gpm


Dimensions: 4.7" x 7.8"

Weight: 22 lbs

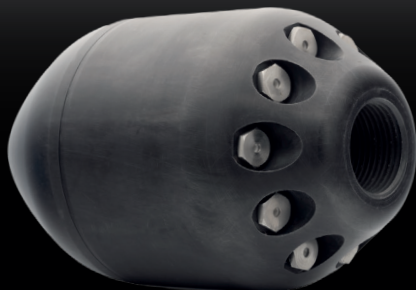
Price: USD \$1,230.00

It is built to release water jets in a laminar flow, without turbulence, creating high-impact streams. Perfect for removing sand and stones from the bottom of the pipelines.



 *Ceramic inserts*

GRENADA 100



Thread: 1" or 3/4"

Pipe diameter: 8" - 24" (*recommended*)

Jets: (R) 10 x M8 (7° - 15°)

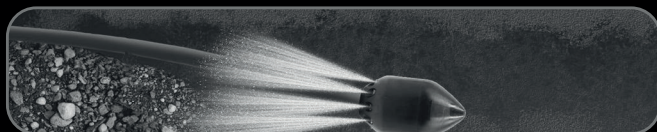
Waterflow: from 53 gpm


Dimensions: 3.9" x 6.8"

Weight: 10.1 lbs

Price: USD \$785.00

Its jets are strategically positioned to maximize the dragging of sediment and built-up dirt, allowing for a deep and uniform cleaning throughout the pipe interior.



 *Ceramic inserts*

BOTTOM CLEANING

DIRT | SAND | GRAVEL

BULLET GRENADE 60

Thread: 1" or 3/4"

Pipe diameter: 6" - 18" (recommended)

Jets: (R) 6 x M8 (10°)

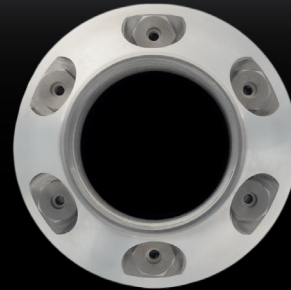
Waterflow: from 16 gpm


Dimensions: 2.3" x 5.2"

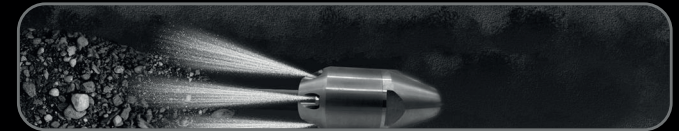
Weight: 2.6 lbs

Price: **USD \$375.00**

Specially designed to travel long distances quickly, the combination of different rear jet angles provides versatility that significantly improves cleaning efficiency.



 Ceramic inserts



GRENADE 70

Thread: 1" or 3/4"

Pipe diameter: 6" - 24" (recommended)

Jets: 12 x M8 (7° - 14° - 21°)

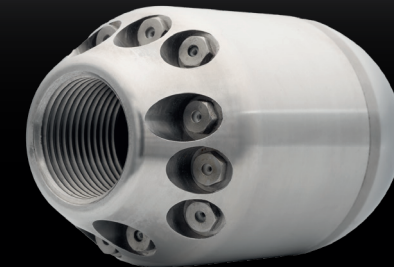
Waterflow: from 32 gpm


Dimensions: 3" x 5"

Weight: 4.4 lbs

Price: **USD \$515.00**

Made of stainless steel, it offers durability and strength, and stands out for its ability to remove debris from the bottom of pipes thanks to its six powerful rear jets.




 Ceramic inserts



FLOUNDER 1"



Swivel fitting included

 Ceramic inserts

Thread: 1" or 3/4"

Pipe diameter: 8" - 48" (recommended)

Jets: (R) 8 x M8 (5° - 10°)

Waterflow: from 53 gpm

Dimensions: 5.8" x 8.8" // 5.8" x 13.3" (swivel fitting)

Weight: 19.8 lbs

Price: USD \$980.00

Bottom-cleaning nozzle with a flat shape and an internal channeling system that increases thrust power, making it perfect for cleaning the bottom of pipelines.



FRANKENSTEIN



Swivel fitting included

 Ceramic inserts

Thread: 1" or 3/4"

Pipe diameter: 8" - 48" (recommended)

Jets: (R) 5 x M8 (5°)

Waterflow: from 53 gpm

Dimensions: 5" x 14.1"

Weight: 26.4 lbs

Price: USD \$975.00

Designed with a tubular body, it includes an internal counterweight to maintain stability during operation, ensuring the water jets always hit the bottom of the pipe.



DEEP UNBLOCKING

ALIEN 1"

Thread: 1" or 3/4"

Pipe diameter: 8" - 24" (recommended)

Jets: (R) 6 x M8 (30° - 10°) + 1 rotating front jet (20°)

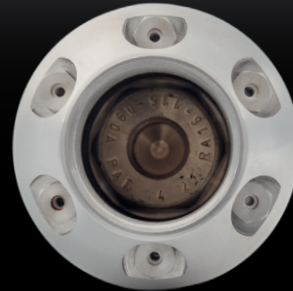
Waterflow: from 42 gpm


Dimensions: 2.3" x 5.2"

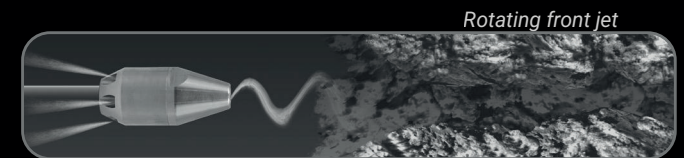
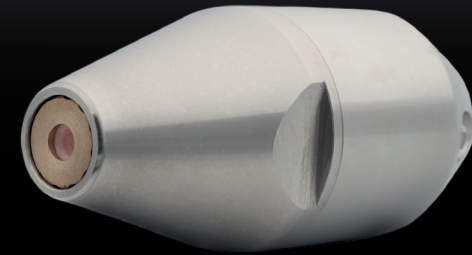
Weight: 3.5 lbs

Price: **USD \$505.00**

Its conical shape and rotating front jet allow it to drill and move forward quickly, providing a thorough and effective unclogging performance.



 Ceramic inserts



MAINTENANCE KIT

1. Front plate

2. Jet Cartridge

3. Small O-ring

4. Large O-ring

Price: **USD \$122.00**



1.



2.

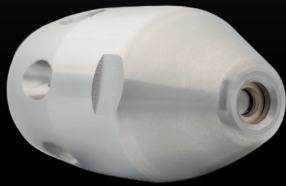



3.



4.

ALIEN 3/4"



 Ceramic inserts

Thread: 3/4"

Pipe diameter: 6" - 10" (recommended)

Jets: (R) 6 x M6 (30°) + 1 rotating front jet (20°)

Waterflow: from 16 gpm

Dimensions: 1.4" x 2.9"

Weight: 0.7 lbs

Price: USD \$350.00

The combination of its conical head and rear jets provides exceptional unclogging power, ensuring every corner of the pipe remains completely free of obstructions.



MAINTENANCE KIT



1. Rear cap

2. Jet

3. Jet Housing

4. Front plate

Price: USD \$95.00

BREAKER 1"

Thread: 1" or 3/4"

Pipe diameter: 6" - 20" (recommended)

Jets: (R) 6 x M6 (25°) // (F) 3 x M6 (15°)+ 1 x M6

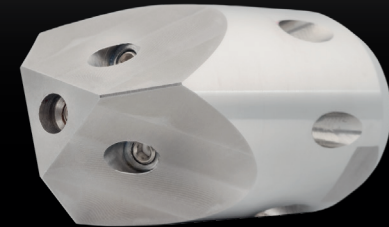
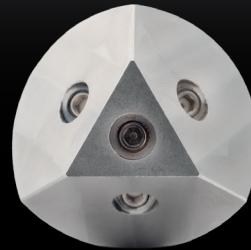
Waterflow: from 21 gpm


Dimensions: 1.8" x 3.5"

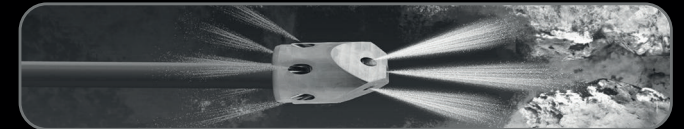
Weight: 1.5 lbs

Price: **USD \$220.00**

Cutting head with three front jets and six rear jets, the breaker plows through everything in its path, delivering extreme and efficient cleaning performance.



 Ceramic inserts



BASIC 3/4"

Thread: 3/4" or 1/2"

Pipe diameter: 6" - 12" (recommended)

Jets: (R) 6 x M6 (15°) // (F) 1 x M6

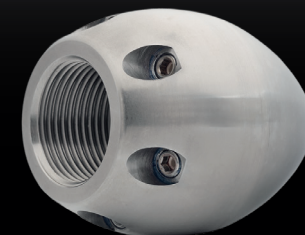
Waterflow: from 16 gpm


Dimensions: 2" x 2.6"

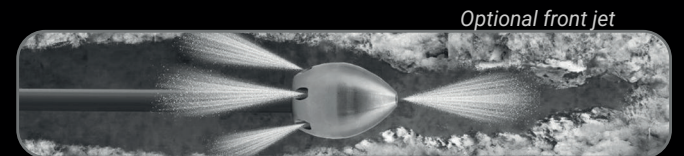
Weight: 1 lbs

Price: **USD \$135.00**

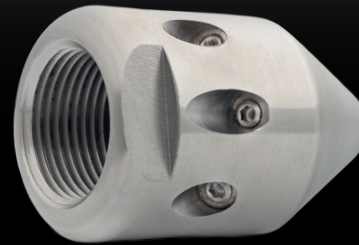
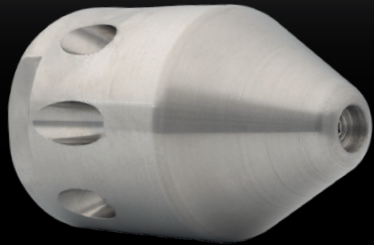
Its basic, economical, and practical design makes it an efficient option for pipe unclogging, ensuring that obstructions are effectively removed every time.



 Ceramic inserts



VAMPIRE 1"



Thread: 1"

Pipe diameter: 8" - 16" (*recommended*)

Jets: (R) 8 x M6 (15° - 30°) // (F) 1 x M6

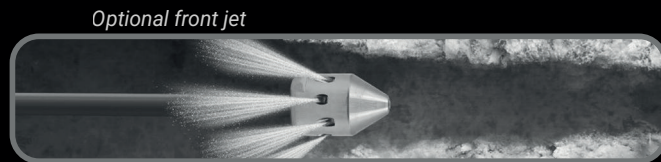
Waterflow: from 48 gpm


Dimensions: 2" x 3"

Weight: 1.2 lbs

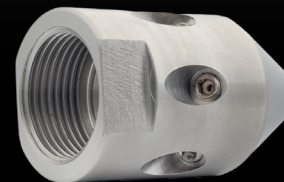
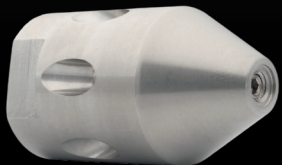
Price: **USD \$195.00**

The Vampire nozzle stands out for its ability to clean pipes thanks to its design with 35° rear jets, delivering extreme and efficient cleaning performance.



 *Ceramic inserts*

VAMPIRE 3/4"



Thread: 3/4"

Pipe diameter: 8" - 12" (*recommended*)

Jets: (R) 6 x M6 (7° - 30°) // (F) 1 x M6

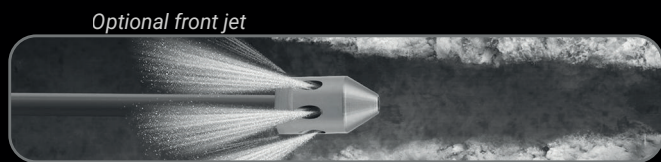
Waterflow: from 16 gpm


Dimensions: 1.3" x 2.3"

Weight: 0.5 lbs

Price: **USD \$115.00**

Especially useful for general cleaning tasks, removal of solid waste, soaps, and other blockages, it offers great flexibility for use in pipes of various diameters.



 *Ceramic inserts*

1" TANK CLEANING NOZZLE



Thread: 1"

Dimensions: 1" x 1" (body)

Weight: 10 lbs

Price: USD \$1,365.00

3/4" TANK CLEANING NOZZLE



Thread: 3/4"

Dimensions: 1" x 0.7" (body)

Weight: 5.2 lbs

Price: USD \$1,100.00

HEAD



Weight: 2 lbs

Dimensions: 6.7" x 2"

*Manual operation possible
using only the cutting head*

Price: USD \$330.00



3 extension bar kit: USD \$111.00



1/2"

3/8"

DEEP CLEANING

ROOTS | LIMESCALE | SOAPS

TARANTULA 80

Thread: 1/2" or 3/8"

Pipe diameter: 6" - 12" (recommended)

Jets: (R) 2 x M8 (25°) // (F) 1 x M8 (15°)

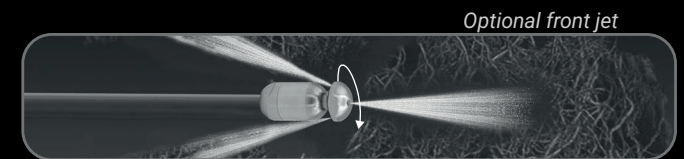
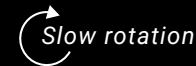
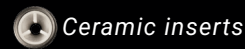
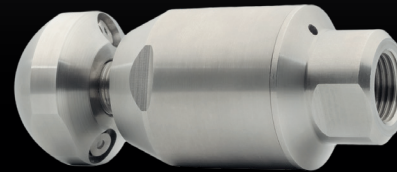
Waterflow: from 18 gpm

Dimensions: 1.9" x 4.9"

Weight: 2.2 lbs

Price: USD \$795.00

Forget about maintenance for a long time. This model has a long service life thanks to the additional adjustable oil reservoir.



MAINTENANCE KIT

1. O-ring
2. Shaft Seal
3. Bearing
4. Dispensing Syringe with sealing washers
5. Adhesive
6. High pressure seal & Brass seat
7. Grease Fitting & Sealing Washer
8. Viscous Fluid

Price: USD \$65.00



TARANTULA 1/2"



Thread: 1/2" or 3/8"

Pipe diameter: 4" - 10" (recommended)

Jets: (R) 2 x M6 (25°) // (F) 1 x M4 (15°)

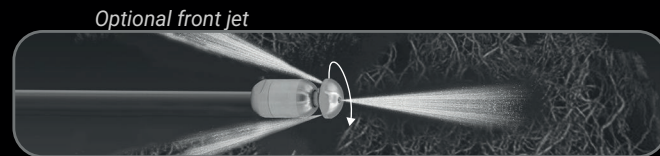
Waterflow: from 10 gpm

Dimensions: 1.5" x 3.7"

Weight: 1 lbs

Price: USD \$710.00

Slow-rotation nozzle, focuses the machine's flow into 2 rear jets that spin slowly. Able to cut roots or any kind of hard sediment. This model comes with a port for direct access to an **additional oil reservoir** for easy care, prolonging its service life and reducing maintenance needs.



Ceramic inserts

Slow rotation

MAINTENANCE KIT



1. Viscous Fluid

2. Grease Fitting & Sealing Washer

3. Adhesive

4. High pressure seal & Brass seat

5. Dispensing Syringe with sealing washers

6. Bearing

7. Sealing Ring

8. Shaft Seal

9. O-Ring

Price: USD \$76.00

DEEP CLEANING

ROOTS | LIMESCALE | SOAPS | GREASE

TARANTULA 3/8"

Thread: 3/8" or 1/4"

Pipe diameter: 3" - 10" (recommended)

Jets: (R) 2 x M4 (25°)

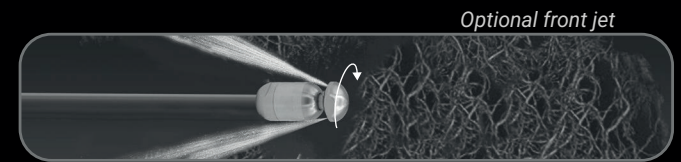
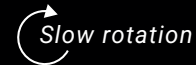
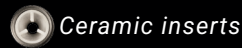
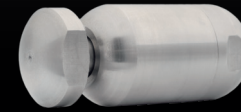
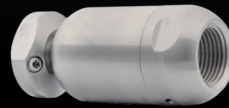
Waterflow: from 8 gpm

Dimensions: 1.1" x 2.6"

Weight: 0.4 lbs

Price: USD \$410.00

Slow-rotating nozzle that focuses the flow into 2 rear jets spinning at low speed, capable of cutting roots or any kind of hard sediment.



MAINTENANCE KIT

1. O-Ring

2. Sealing Ring

3. Shaft Seal

4. Bearing

5. Dispensing Syringe

6. High pressure seal & Brass seat

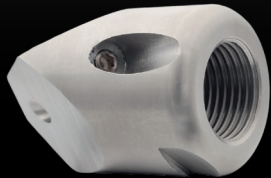
7. Adhesive

8. Viscous Fluid

Price: USD \$65.00



BREAKER 1/2"



Thread: 1/2"

Pipe diameter: 3" - 8" (recommended)

Jets: (R) 3 x M6 (25°) // (F) 3 x M4 + 1 x M4 (15°)

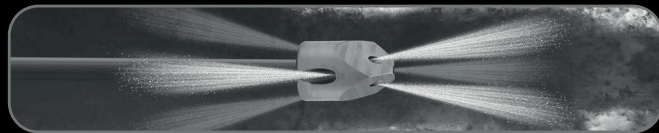
Waterflow: from 10 gpm


Dimensions: 1.4" x 2.2"

Weight: 0.4 lbs

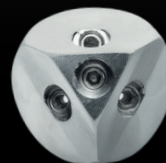
Price: USD \$155.00

Nozzle designed with powerful front jets capable of clearing the toughest blockages.



 Ceramic inserts

BREAKER 3/8"



Thread: 3/8"

Pipe diameter: 3" - 6" (recommended)

Jets: (R) 3 x M4 (25°) // (F) 3 x M4 + 1 x M4 (15°)

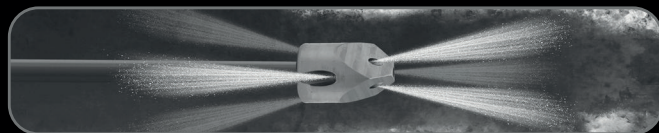
Waterflow: from 8 gpm


Dimensions: 1" x 1.7"

Weight: 0.18 lbs

Price: USD \$120.00

3/8" version of the classic Breaker nozzle; its compact size allows it to reach the tightest spots with its original power. Ideal for precision work in narrow or hard-to-reach areas.



 Ceramic inserts

ALIEN TURBO 1/2"

Thread: 1/2" or 3/8"

Pipe diameter: 6" - 18" (recommended)

Jets: (R) 3 x M6 (7°) + 1 rotating front jet (20°)

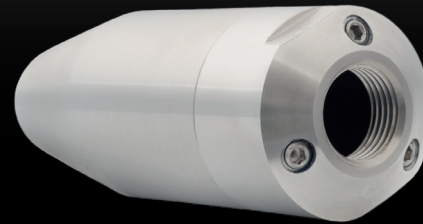
Waterflow: from 10 gpm


Dimensions: 1.8" x 4.9"

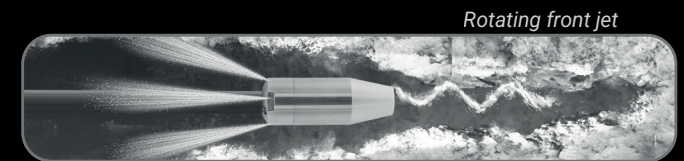
Weight: 2 lbs

Price: USD \$375.00

Designed for cleaning and unblocking pipes, especially where the removal of difficult blockages and obstructions is required.



 Ceramic inserts



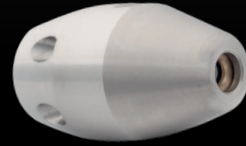
MAINTENANCE KIT

1. Front plate
2. Jet Cartridge
3. Small O-ring
4. Large O-ring

Price: USD \$122.00



ALIEN 1/2"



Thread: 1/2" or 3/8"

Pipe diameter: 3" - 8" (recommended)

Jets: (R) 6 x M4 (15°) + 1 rotating front jet (20°)

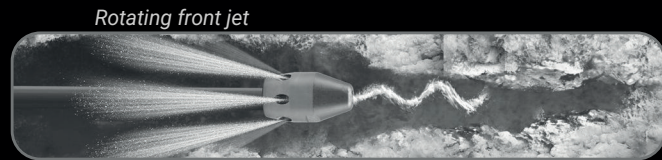
Waterflow: from 10 gpm


Dimensions: 1.3" x 2.2"

Weight: 0.4 lbs

Price: USD \$235.00

Its conical shape and rotating front jet allow it to drill and advance quickly, providing a complete and effective unblocking.



 Ceramic inserts

MAINTENANCE KIT



1. Rear cap

2. Jet

3. Jet Housing

4. Front plate

Price: USD \$95.00

BOTTOM CLEANING

DIRT | SAND | GRAVEL

HEAVY FLOUNDER 1/2"

Thread: 1/2" or 3/8"

Pipe diameter: 6" - 24" (recommended)

Jets: (R) 4 x M6 (5°)

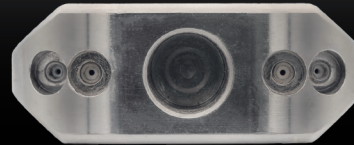
Waterflow: from 21 gpm

Dimensions: 3.5" x 5.9" // 3.5" x 9.4" (w/swivel)

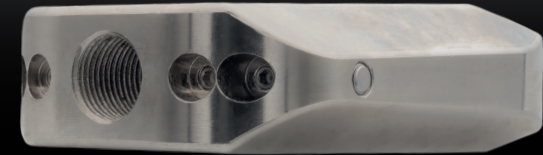
Weight: 6.2 lbs // 7 lbs (w/thread)


Price: **USD \$430.00**

Nozzles with low-slope rear jets to carry away all types of sediment, such as gravel, stones or debris.



SWIVEL FITTING INCLUDED



 Ceramic inserts



LIGHT FLOUNDER 1/2"

Thread: 1/2" or 3/8"

Pipe diameter: 6" - 16" (recommended)

Jets: (R) 4 x M6 (5°)

Waterflow: from 10 gpm

Dimensions: 3.5" x 5.9" // 3.5" x 9.4" (w/swivel)

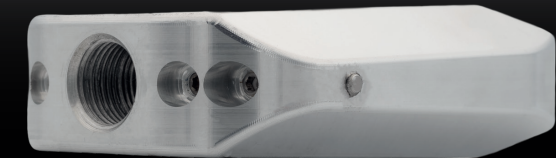
Weight: 2 lbs // 2.9 lbs (w/thread)


Price: **USD \$305.00**

The aluminium construction of this nozzle provides a weight reduction of 4.4 lbs compared to its steel counterpart, giving a higher travel speed.



SWIVEL FITTING INCLUDED



 Ceramic inserts



GRENADE 50



Thread: 1/2" or 3/8"

Pipe diameter: 6" - 16" (*recommended*)

Jets: (R) 8 x M8 (7° - 15°)

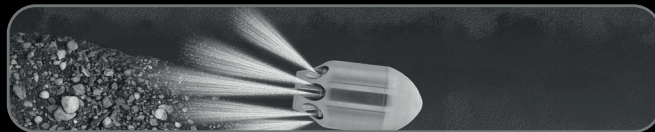
Waterflow: from 10 gpm


Dimensions: 2" x 3.7"

Weight: 1.6 lbs

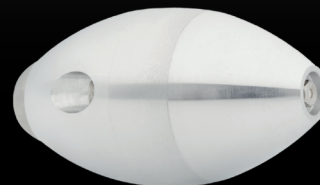
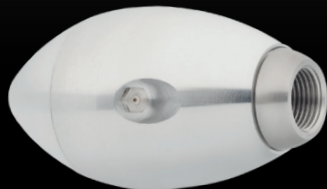
Price: **USD \$265.00**

Nozzles with low-slope rear jets to carry away all types of sediment, such as gravel, stones or debris.



 *Ceramic inserts*

LYNX 1/2"



Thread: 1/2" or 3/8"

Pipe diameter: 6" - 16" (*recommended*)

Jets: (R) 3 x M8 (7° o 25°) // (F) 1 x M8

Waterflow: from 10 gpm

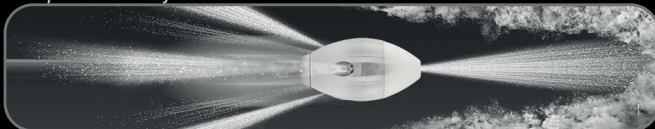
Dimensions: 2.5" x 4.7"


Weight: 1.3 lbs

Price: **USD \$225.00**

Our Lynx is a lightweight nozzle designed for long distance and bottom cleaning, made of aluminium.

Optional front jet



 *Ceramic inserts*

ROOT CUTTERS

ROOT-CUTTER 1/2"

Thread: 1/2" or 3/8"

Pipe diameter: 3" - 8" (recommended)

Jets: (R) 6 x M4 (15°) // (F) 3 x M4

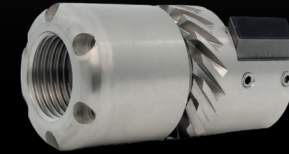
Waterflow: from 10 gpm


Dimensions: 1.4" x 2.8"

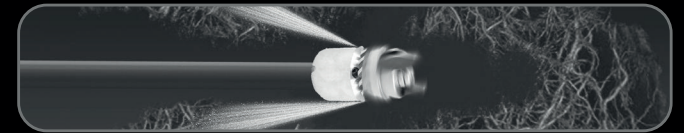
Weight: 0.7 lbs

Price: **USD \$399.00**

It stands out for its ability to cut and remove roots inside pipes. With use, the blades may wear out but are easily replaceable.



 Ceramic inserts



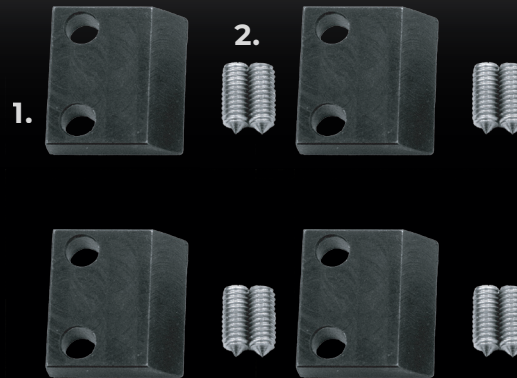
SET OF REPLACEMENT BLADES

1. Blade

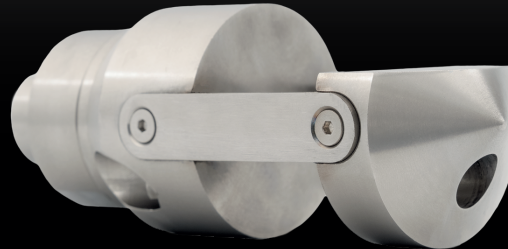
2. Screws

Price: **USD \$50.00**

Set of 4 blades and 8 screws for the root cutter 1/2" nozzle. The blades are made of hardened steel.



HEAVY VIBRATING 1/2"



Thread: 1/2" or 3/8"

Pipe diameter: 6" - 16" (recommended)

Jets: (R) 3 x M4(25°) // (S) 2 x M8(25°)

Waterflow: from 10 gpm


Dimensions: 2.2" x 6.5"

Weight: 2.9 lbs

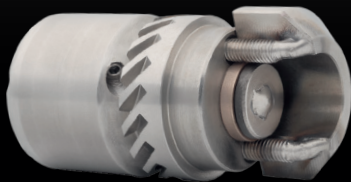
Price: USD \$505.00

With increased size and weight, it performs the same function but is aimed at larger deposits and pipelines.



 Ceramic inserts

LIGHT VIBRATING 1/2"



Thread: 1/2" or 3/8"

Pipe diameter: 3" - 8" (recommended)

Jets: (R) 6 x M4 (25°) // (F) 3 x M4

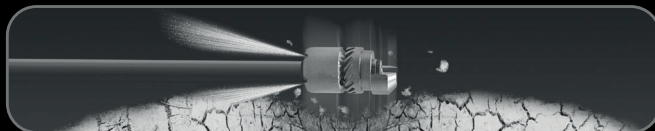
Waterflow: from 10 gpm


Dimensions: 1.4" x 2.7"

Weight: 0.7 lbs

Price: USD \$345.00

Designed to generate powerful vibration, ideal for tough jobs like removing cement and lime scale deposits.



 Ceramic inserts

CLEANING & UNBLOCKING

BUTTON 1/2"

Thread: 1/2" or 3/8"

Pipe diameter: 3" - 6" (recommended)

Jets: (R) 6 x M4 (15°) // (F) 1 x M4

Waterflow: from 10 gpm


Dimensions: 1.4" x 1.2"

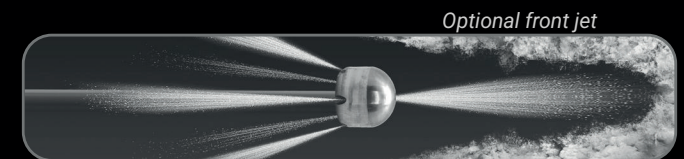
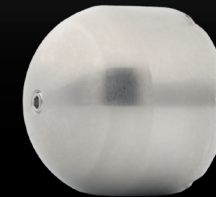
Weight: 0.2 lbs

Price: **USD \$115.00**

Nozzles for daily use for basic unblocking, notable for their small size and high functionality.



 Ceramic inserts



B R U N A 1 / 2 "

Thread: 1/2" or 3/8"

Pipe diameter: 3" - 6" (recommended)

Jets: (R) 6 drilled jets (15°) // (F) 1 drilled one

Waterflow: from 10 gpm

Dimensions: 1.4" x 1.6"

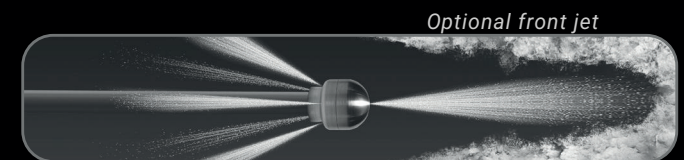
Weight: 0.3 lbs

Price: **USD \$59.00**

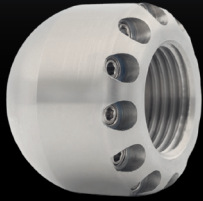
Everyday nozzles for basic unblocking.



Drilled jets



BUTTON 1/2" 12 JETS



Thread: 1/2" or 3/8"

Pipe diameter: 3" - 8" (recommended)

Jets: (R) 12 x M4 (7°) // (F) 1 x M4

Waterflow: from 26 gpm

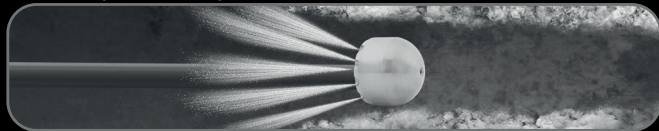
Dimensions: 1.4" x 1.2"


Weight: 0.2 lbs

Price: **USD \$125.00**

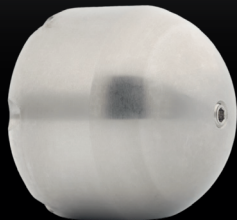
Equipped with 12 jets, this nozzle delivers comprehensive cleaning of all internal surfaces and hard-to-reach areas within the pipe.

Optional front jet



 Ceramic inserts

BUTTON 1/2" MIXED



Thread: 1/2" or 3/8"

Pipe diameter: 3" - 6" (recommended)

Jets: (T) 6 x M4 (7° - 15°) // (D) 1 x M4

Waterflow: from 10 gpm

Dimensions: 1.4" x 1.6"


Weight: 0.2 lbs

Price: **USD \$115.00**

The mixed nozzle combines jets set at various angles, offering enhanced versatility for a wide range of cleaning applications.

Optional front jet



 Ceramic inserts

CLEANING & UNBLOCKING

GRADES 30° 6 JETS

Thread: 1/2" or 3/8"

Pipe diameter: 3" - 10" (recommended)

Jets: (R) 6 x M6 (30°) // (F) 1 x M6

Waterflow: from 10 gpm

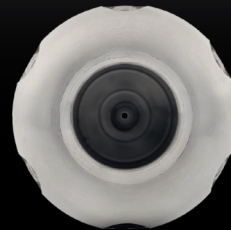
Dimensions: 2" x 2"

Weight: 0.66 lbs

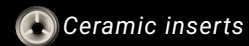
Price: USD \$115.00

Nozzles with rear jets at 30° angles for effective pipe cleaning.

Model with 3 rear jets available.



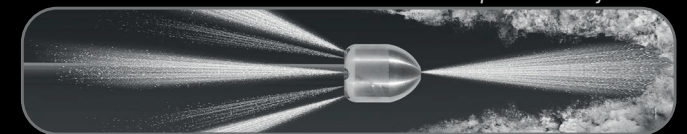
For cleaning



Ceramic inserts



Optional front jet



GRADES 7° 6 JETS

Thread: 1/2" or 3/8"

Pipe diameter: 3" - 10" (recommended)

Jets: (R) 6 x M6 (7°) // (F) 1 x M6

Waterflow: from 10 gpm

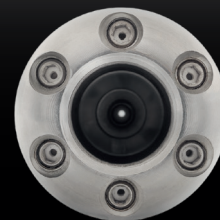
Dimensions: 1.6" x 2"

Weight: 0.7 lbs

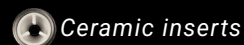
Price: USD \$115.00

Nozzles with rear jets at 30° angles for effective pipe cleaning.

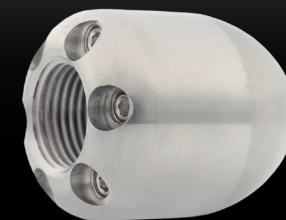
Model with 3 rear jets available.



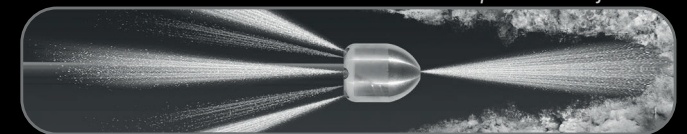
For unclogging



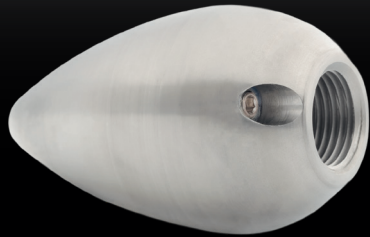
Ceramic inserts



Optional front jet



BULLET 1/2"



Thread: 1/2" or 3/8"

Pipe diameter: 4" - 8" (recommended)

Jets: (R) 3 x M6 (7°) // (F) 1 x M6

Waterflow: from 10 gpm

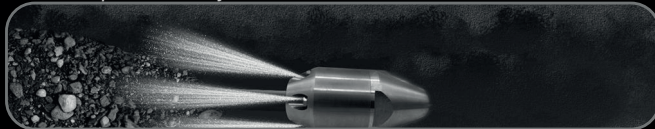
Dimensions: 1.9" x 3.2"


Weight: 1.3 lbs

Price: **USD \$160.00**

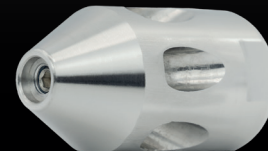
Known for its ability to cover long distances and its high functionality.
Model with 6 rear jets available.

Optional front jet



 Ceramic inserts

VAMPIRE 1/2"



Thread: 1/2" or 3/8"

Pipe diameter: 4" - 8" (recommended)

Jets: (R) 6 x M6 (25°) // (F) 1 x M6

Waterflow: from 10 gpm

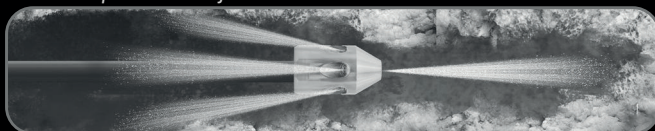
Dimensions: 1.1" x 2"


Weight: 0.3 lbs

Price: **USD \$105.00**

Nozzles with rear jets at different angles for effective pipe cleaning. Ideal for general cleaning, soaps, grease, and all common maintenance tasks.

Optional front jet



 Ceramic inserts

ROTATING WIPE CATCHER 1/2"

Thread: 1/2" or 3/8"

Pipe diameter: 3" - 8" (recommended)

Jets: (R) 6 x M4 (15°) // (F) 3 x M4

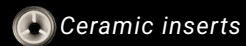
Waterflow: from 10 gpm

Dimensions: 1.4" x 2.6"

Weight: 0.6 lbs

Price: **USD \$345.00**

Using its rotating turbine, it effectively hooks and removes rags and other textile waste from pipes.



Ceramic inserts



BASIC WIPE-CATCHER 1/2"

Thread: 1/2" or 3/8

Pipe diameter: 3" - 8" (recommended)

Jets: (R) 6 x M4 (15°) // (F) 1 x M4

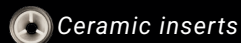
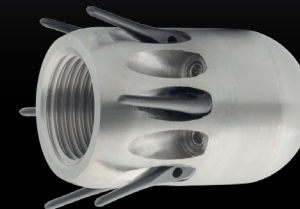
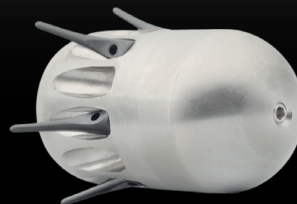
Waterflow: from 10 gpm

Dimensions: 1.2" x 2"

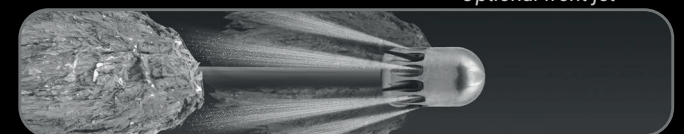
Weight: 0.3 lbs

Price: **USD \$195.00**

Specifically designed to hook and remove rags and other textile waste from pipes, the Wipe-Catcher nozzle stands out for its efficiency and ease of use.

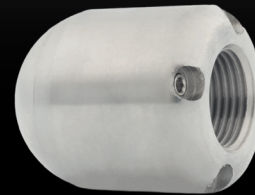
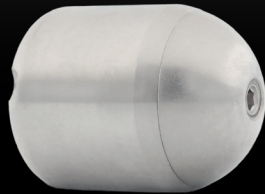


Ceramic inserts



Optional front jet

TIGER 3/8"



Thread: 3/8"

Pipe diameter: 2" - 6" (recommended)

Jets: (R) 4 x M4 (15°) // (F) 1 x M6

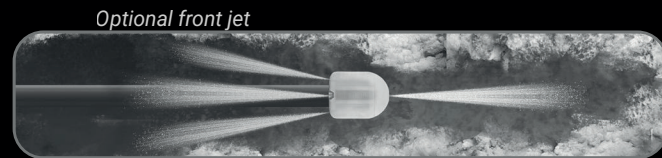
Waterflow: from 8 gpm


Dimensions: 1.1" x 1.5"

Weight: 0.3 lbs

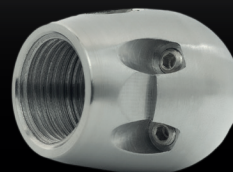
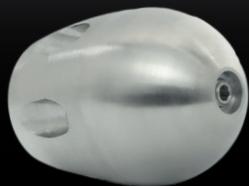
Price: USD \$105.00

The tiger nozzle is ideal for unclogging; its shape and size allow it to penetrate and reach the farthest corners of the pipe.



 Ceramic inserts

BASIC 3/8"



Thread: 3/8" or 1/4"

Pipe diameter: 2" - 6" (recommended)

Jets: (R) 6 x M4 (15°) // (F) 1 x M4

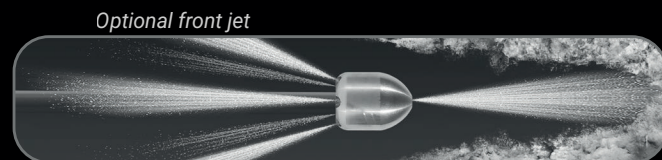
Waterflow: from 8 gpm


Dimensions: 1" x 1.4"

Weight: 0.2 lbs

Price: USD \$95.00

Compact version of the successful Basic nozzle, perfect for smaller pipelines and equipment, while maintaining the effective design of its larger counterpart.



 Ceramic inserts

E L B O W S & T E E S

ANACONDA *THE BIG ONE*

Thread: 1/2" or 3/8"

Pipe diameter: 4" - 16" (*recommended*)

Jets: (R) 3 x M6 (15°) // (S) 1 x M6 (90°)

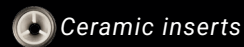
Waterflow: from 10 gpm

Dimensions: 1.6" x 2.6"

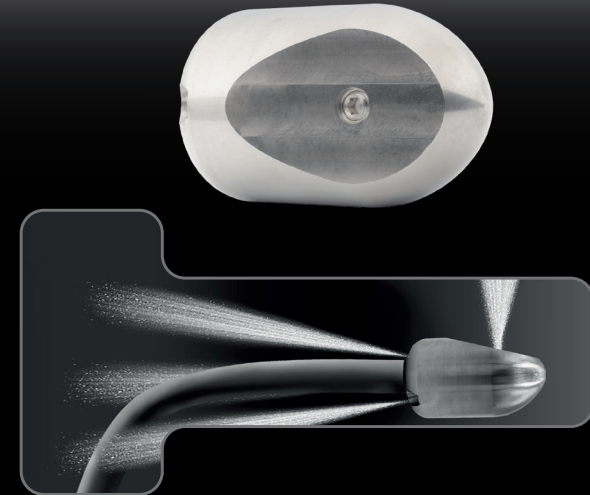
Weight: 0.8 lbs

Price: **USD \$155.00**

Designed to rotate inside inspection chambers using its side jet.



Ceramic inserts



ANACONDA *THE SMALL ONE*

Thread: 1/2" or 3/8"

Pipe diameter: 3" - 6" (*recommended*)

Jets: (R) 6 x M4 (7°) // (S) 1 x M4 (90°) // (F) 1 x M4

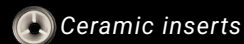
Waterflow: from 10 gpm

Dimensions: 1.4" x 1.2"

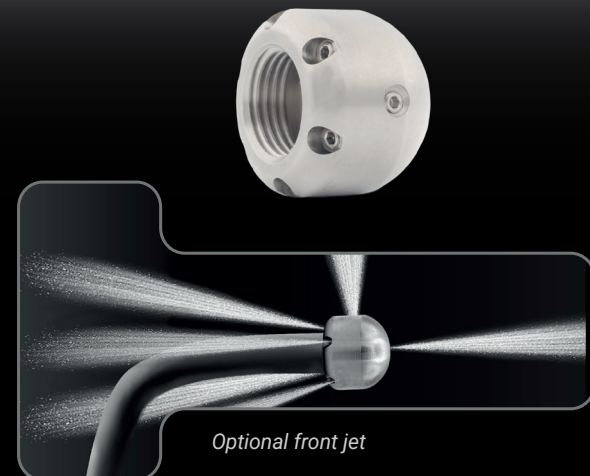
Weight: 0.2 lbs

Price: **USD \$115.00**

Known for its versatility and functionality, it features a side jet that allows quick and easy direction changes to navigate pipe bends.

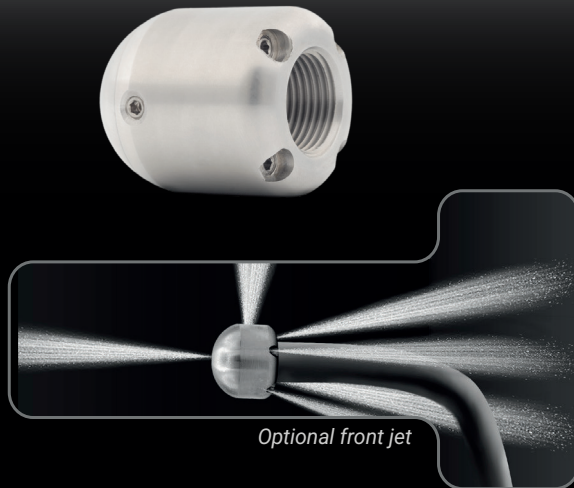



Ceramic inserts



Optional front jet

ANACONDA 3/8"



 Ceramic inserts

Thread: 3/8" or 1/4"

Pipe diameter: 4" - 6" (recommended)

Jets: (R) 4 x M4 (15°) // (S) 1 x M4 (90°) // (F) 1 x M6

Waterflow: from 8 gpm

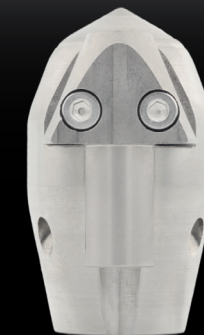
Dimensions: 1.2" x 1.5"


Weight: 0.3 lbs

Price: USD \$105.00

It stands out for its versatility and functionality, with a side jet that allows you to change direction and pass pipe bends quickly and easily.

CAMERA 1/2"



 Ceramic inserts

Thread: 1/2" or 3/8"

Pipe diameter: 3" - 20" (recommended)

Jets: (R) 3 x M4 (15°)

Waterflow: from 10 gpm

Dimensions: 1.4" x 2.4"

Weight: 0.5 lbs

Price: USD \$210.00

Designed for easy pushing and handling of the camera head in manual pipe inspections.

TANK CLEANER 1/2"



Thread: 1/2"

Dimensions: 9" x 6" (body)

Weight: 3.7 lbs

Price: USD \$840.00

HEAD



Weight: 2 lbs

Dimensions: 6.7" x 2"

*Manual operation possible
using only the cutting head*

Price: USD \$330.00



3 extension bar kit: USD \$111.00



1/4"

1/8"

DEEP UNBLOCKING

ALIEN 1/4"

Thread: 1/4" or 1/8"

Pipe diameter: 2" - 6" (recommended)

Jets: (R) 3 drilled holes (15°) // 1 rotating front jet (20°)

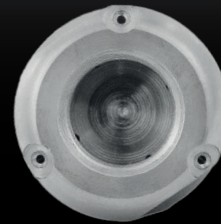
Waterflow: from 8 gpm

Dimensions: 0.9" x 1.6"

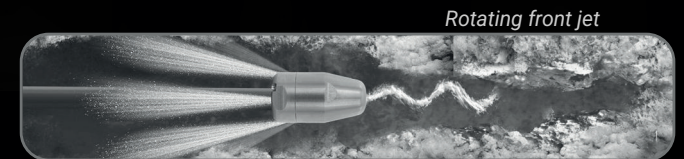
Weight: 0.3 lbs

Price: USD \$210.00

Its conical shape and rotating front jet allow it to drill and advance quickly, providing a complete and effective unblocking.



Drilled jets



Rotating front jet

MAINTENANCE KIT

1. Ceramic Ring

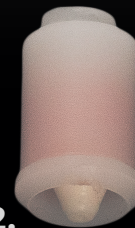
2. Jet Insert

3. O-Ring

Price: USD \$95.00



1.

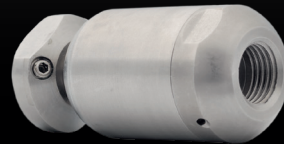
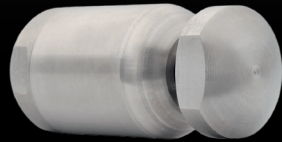


2.



3.

TARANTULA 1/4"



Thread: 1/4" or 1/8"

Pipe diameter: 3" - 6" (recommended)

Jets: (R) 2 x M4 (25°)

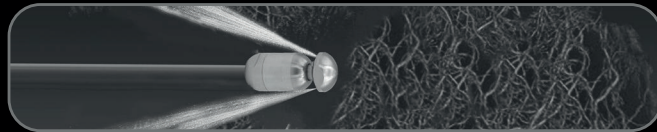
Waterflow: from 8 gpm


Dimensions: 1.1" x 2.5"


Weight: 0.4 lbs

Price: USD \$370.00

Thanks to its automatically rotating dual-jet head, it provides extreme cleaning and cutting of any roots it encounters.



 Ceramic inserts

 Slow rotation

MAINTENANCE KIT



1. O-Ring

2. Sealing Ring

3. Shaft Seal

4. Bearing

5. Dispensing Syringe

6. High pressure seal & Brass seat

7. Adhesive

8. Viscous Fluid

Price: USD \$65.00

CLEANING & UNBLOCKING

BREAKER 1/4"

Thread: 1/4"

Pipe diameter: 2" - 6" (recommended)

Jets: (R) 6 x M4 (7°) // (F) 3 x M4 (15°)

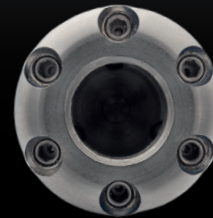
Waterflow: from 8 gpm


Dimensions: 1" x 1.2"

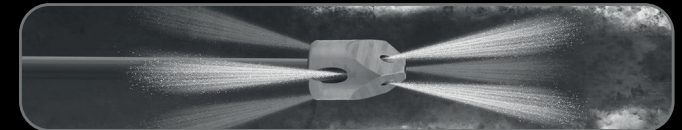
Weight: 0.2 lbs

Price: **USD \$115.00**

Our Breaker is distinguished by its ability to unblock pipes thanks to its head with three front jets, providing extreme and efficient cleaning.



 Ceramic inserts



TIGER 1/4"

Thread: 1/4" or 1/8"

Pipe diameter: 2" - 6" (recommended)

Jets: (R) 6 x M4 (7°) // (F) 1 x M4

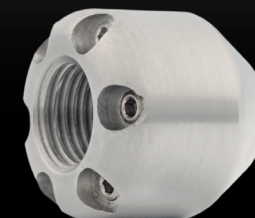
Waterflow: from 8 gpm


Dimensions: 1" x 1"

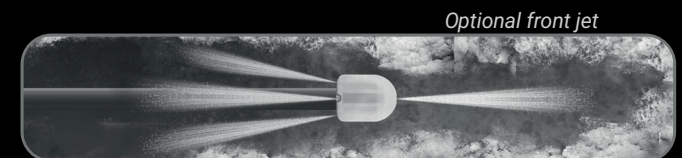
Weight: 0.1 lbs

Price: **USD \$105.00**

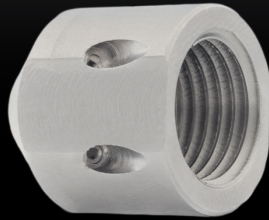
It stands out for its high thrust and small dimensions, allowing it to pass through elbows and small pipes.



 Ceramic inserts



BASIC 1/4"



Thread: 1/4" or 1/8"

Pipe diameter: 2" - 6" (recommended)

Jets: (R) 6 drilled jets (15°) // (F) 1 x M4

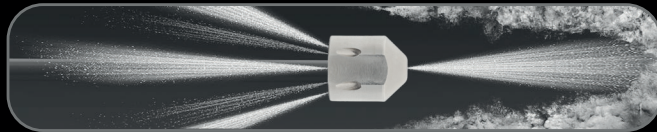
Waterflow: from 8 gpm

Dimensions: 0.7" x 0.8"

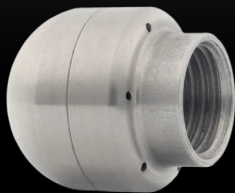
Weight: 0.03 lbs

Price: **USD \$55.00**

Nozzle designed for unblocking and cleaning pipes in confined spaces. Its compact design allows access to narrower and more difficult areas of pipes.



BRUNA 1/4"



Thread: 1/4" or 1/8"

Pipe diameter: 2" - 6" (recommended)

Jets: (R) 6 drilled jets (15°) // (F) 1 optional drilled jet

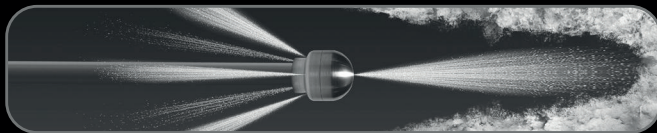
Waterflow: from 8 gpm

Dimensions: 0.8" x 0.9"

Weight: 0.05 lbs

Price: **USD \$55.00**

Our Bruna 1/4" nozzle is ideal for companies looking for an economical and powerful nozzle, made in two parts for water channelling and with a very affordable price.



Drilled jets

ROTATING WIPE CATCHER 1/4"

Thread: 1/4" or 1/8"

Pipe diameter: 2" - 6" (recommended)

Jets: (R) 6 x M4 (15°) // (F) 3 x M4

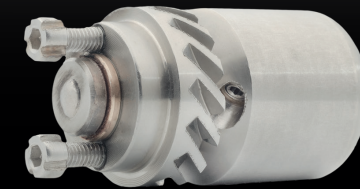
Waterflow: from 8 gpm


Dimensions: 1.1" x 2.2"

Weight: 0.3 lbs

Price: **USD \$325.00**

The 1/4" Rotating Wipe Catcher features a rotating turbine which catches the rags when pulling backwards and can remove textile and other debris from the pipe.



 Ceramic inserts



ANACONDA 1/4"

Thread: 1/4"

Pipe diameter: 2" - 6" (recommended)

Jets: (R) 6 x M4 (7°) // (S) 1 x M4 (90°) // (F) 1 x M4

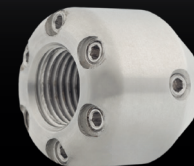
Waterflow: from 8 gpm


Dimensions: 1" x 1"

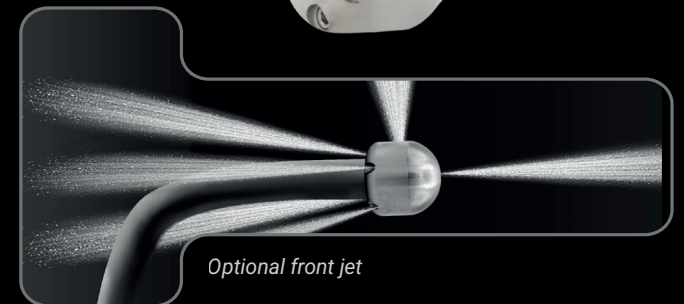
Weight: 0.1 lbs

Price: **USD \$105.00**

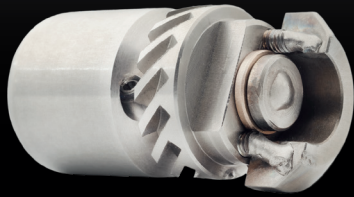
Its compact design makes it easy to pass through bends and bifurcations, minimising wear and tear and the need for maintenance, providing a reliable and durable cleaning solution.



 Ceramic inserts



MINI VIBRATING 1/4"



Thread: 1/4" or 1/8"

Pipe diameter: 2" - 6" (recommended)

Jets: (R) 6 x M4 (15°) // (F) 3 x M4

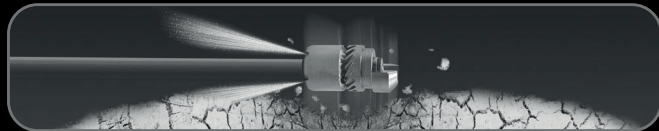
Waterflow: from 8 gpm

Dimensions: 1.1" x 2.1"

Weight: 0.4 lbs

Price: **USD \$295.00**

Designed to generate a powerful vibration, ideal for tough jobs such as removing cement and limescale deposits.



ROOT-CUTTER 1/4"



Thread: 1/4" or 1/8"

Pipe diameter: 2" - 6" (recommended)

Jets: (R) 6 x M4 (15°) // (F) 3 x M4

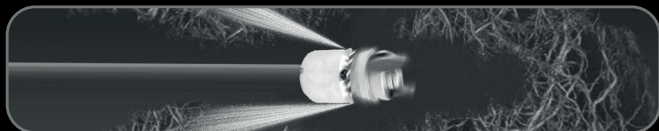
Waterflow: from 8 gpm


Dimensions: 1.1" x 2.1"

Weight: 0.3 lbs

Price: **USD \$325.00**

This nozzle is distinctive for its ability to cut and remove roots inside pipes thanks to its rotating heads with cutting parts and six rear jets.



 Ceramic inserts

1 / 8 " N O Z Z L E S

K-TURBO 1/8" 6 JETS

Thread: 1/8"

Pipe diameter: 2" - 6" (recommended)

Jets: (R) 6 x M4 (15°) // (F) 1 optional drilled jet

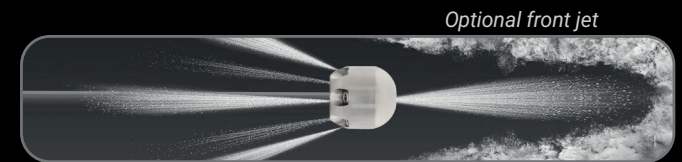
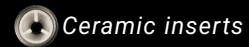
Waterflow: from 6 gpm

Dimensions: 0.7" x 0.7"

Weight: 0.04 lbs

Price: USD \$82.00

It is particularly useful for general cleaning and debris removal work on small diameter pipes.



K-TURBO 1/8" 3 JETS

Thread: 1/8"

Pipe diameter: 1" - 3" (recommended)

Jets: (R) 3 drilled jets (15°) // (F) 1 optional drilled jet

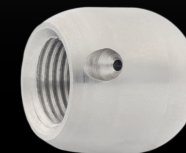
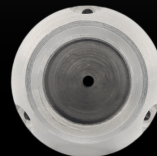
Waterflow: from 6 gpm

Dimensions: 0.6" x 0.7"

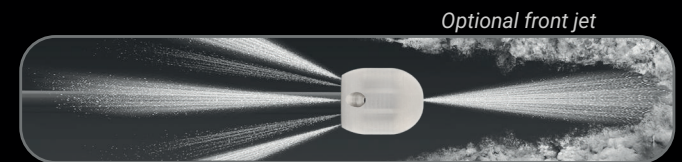
Weight: 0.03 lbs

Price: USD \$42.00

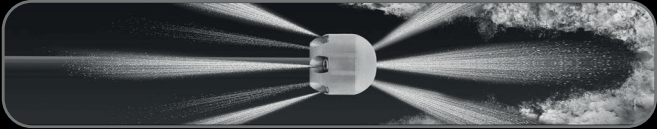
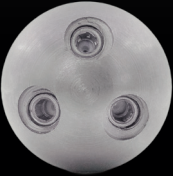
Its compact design, rear and front jets make it an indispensable tool for pipe cleaning jobs in sinks and other applications.




Drilled jets



BREAKER 1/8"



 Ceramic inserts

Thread: 1/8"

Pipe diameter: 2" - 4" (recommended)

Jets: (R) 6 x M4 (15°) // (F) 3 x M8 (15°)

Waterflow: from 6 gpm

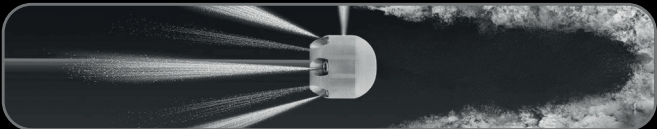
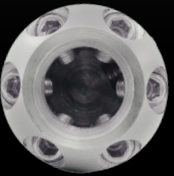
Dimensions: 0.7" x 0.7"


Weight: 0.04 lbs

Price: USD \$115.00

Our Breaker is distinguished by its ability to unblock pipes thanks to its head with three front jets, providing extreme cleaning.

ANACONDA 1/8"



 Ceramic inserts

Thread: 1/8"

Pipe diameter: 2" - 4" (recommended)

Jets: (R) 6 x M4 (15°) // (S) 1 x M4 (90°)

Waterflow: from 6 gpm

Dimensions: 0.7" x 0.7"

Weight: 0.04 lbs

Price: USD \$82.00

Designed to generate powerful vibration, ideal for tough jobs like removing cement and lime scale deposits.

CAMERA 1/4"

Thread: 1/4" or 1/8"

Pipe diameter: 2" - 6" (recommended)

Jets: (R) 3 x M6 (15°)

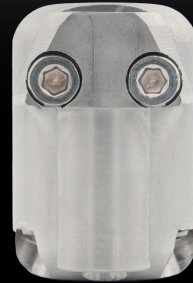
Waterflow: from 8 gpm


Dimensions: 1.3" x 1.5"

Weight: 0.3 lbs

Price: **USD \$175.00**

Designed for easy pushing and handling of the camera head in manual pipe inspections.



 Ceramic inserts



TURBOROTATING

Thread: 1/4"

Dimensions: 41 x 84 mm

Weight: 0.59 lbs (266 gr)

Adaptable to all other sizes

Price: **USD \$176.00**





OTHER PRODUCTS

Control case

Keyboard & USB Output

External Dimensions: 8,1" x 6,8" x 9,6"

Weight: 23 lbs

Screen size: 18.5"

Resolution: 1024 x 600 HD



Cable reel

Cable Length: 98 feet (includes meter counter)

Dimensions: 14" x 16" x 14"

Weight: 24 lbs

Tension Resistance & PUR Coating

Software & System

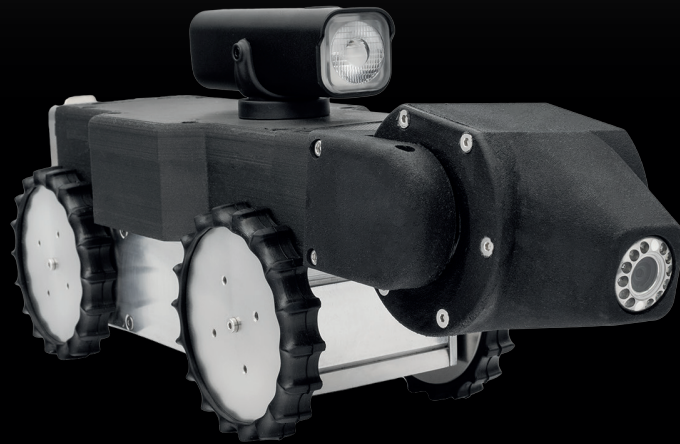
Private Software

Computer: 12 GB RAM & 256 GB SSD

Features: video recording, inclinometers, image capture, text or symbol insertion



A L P H A 3 0 0



Robot body

Material: aluminum, stainless steel, iron and XT plastic

Drive System: four-wheel drive

Working Range: pipes from 6"

Protection: IP54

Inclination Sensor: yes

Dimensions: 9" x 4.3" x 5.5"

Weight: 8.8 lbs

Camera

Lighting: adjustable high-intensity LED

Focus: Automatic

Resolution: 720 x 576

Field of view: 130°

Emitter: 512 Hz

Price: **USD \$9,350.00**



BRUNA TRANSMITTER NOZZLE

Thread: 1/2", 3/8" and 1/4" thread options

Frequency: 512 Hz

Jets: (R) 3 x M6 (15°)

Waterflow: from 8 gpm

Dimensions: 1.4" x 4.4"

Weight: 0.62 lbs

Price: **USD \$420.00**

Engineered to make pipe location quick and effortless. It emits a 512 Hz signal that allows operators to easily trace the nozzle's position and the pipe route during jetting operations.



FLEX HOSES



Hose: 1/4"

Thread: 1/8"

Pipes: from 1" to 6"

33 ft: **USD \$199.00**

49 ft: **USD \$280.00**

66 ft: **USD \$365.00**

98 ft: **USD \$549.00**

164 ft: **USD \$1,015.00**

Nozzles are not included.

NOZZLE HOLDER

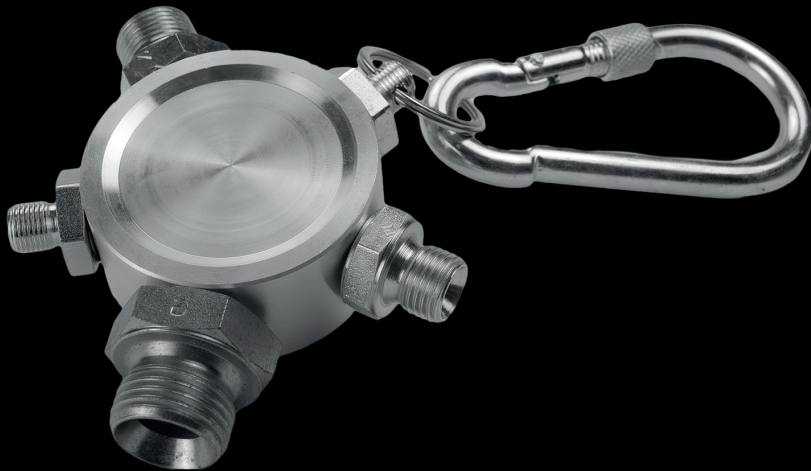
Dimensions: 1" x 2"

Weight: 0.81 lbs

Designed to be attached to your work belt for quick access to your 4 favourite nozzles, you can have nozzles at your fingertips to suit the needs of the job, quickly and efficiently.

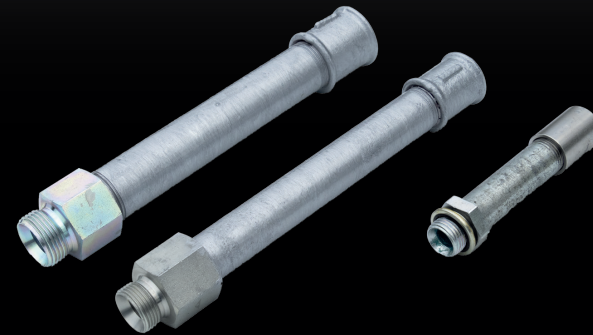
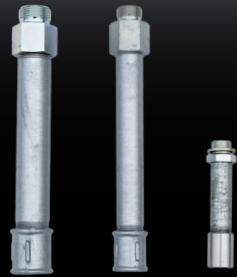
Available for 1/2" | 3/8" | 1/4" | 1/8" nozzles and with the possibility to combine all of them in mixed form on the same key ring.

Price: USD \$75.00



OTHER PRODUCTS

ANTI-RETURN BAR



Thread:	1"	3/4"	1/2"
Weight:	1.9 lbs	1.3 lbs	0.5 lbs
Dimensions:	10.6" x 1.9"	10.4" x 1.6"	5" x 1.2"
Price:	\$115.00	\$105.00	\$98.00

Bar to be placed between hose and nozzle

REEL

Connection: 1/2"

Nozzle holder

Dimensions: 11.8" x 11.8" x 11.8"

Weight: 8.8 lbs

Price: USD \$347.00

Flex hose not included.



⚠ **WARNING** ⚠

Operations with waterjetting equipment can be potentially hazardous. Caution **MUST** be exercised prior to and during machine and water jet tool use.

Please read and follow all of these instructions. Deviating from safety instructions and recommended practices can lead to severe injury and/or death.

The immediate work area **MUST** be marked off to keep out untrained persons.

Inspect the equipment for visible signs of deterioration, damage, and improper assembly. Do not operate if damaged, until repaired.

Make sure all threaded connections are tight and free of leaks.

Always de-energize the system before opening a door to service or replace any parts. Failure to do so can result in severe injury and/or death.

PRE-RUN SAFETY CHECK

Install mechanical stops, stingers and backout preventers as appropriate when doing any tube, pipe or vessel cleaning.

Complete a job specific risk assessment and act on the resulting actions.

Ensure the waterjetting zone is properly barricaded and that warning signs are posted.

Ensure the work place is free of unnecessary objects (e.g. loose parts, hoses, tools).

Ensure all Operators are using the correct Personal Protective Equipment (PPE).

Check that the air hoses are properly connected and tight.

Check all hoses and accessories for damage prior to use. Do not use damaged items. Only high quality hoses intended for waterjetting applications should be used as high-pressure hoses.

Check all high-pressure threaded connections for tightness.

Operate the high-pressure water at full pressure and, if applicable, use the Pneumatic Foot Pedal Dump Control to verify that the dump valve is working properly.

Ensure that Operators never connect, disconnect, or tighten hoses, adapters, or accessories with the high-pressure water pump unit running.

Ensure no personnel are in the jetting zone.

PERSONAL PROTECTIVE EQUIPMENT

Use of Personal Protective Equipment (PPE) is dependent on the working pressure of water and the cleaning application. Managers, Supervisors, and Operators **MUST** carry out a job specific risk assessment to define the exact requirements for PPE.

Hygiene—Operators are advised to wash thoroughly after all waterjetting operations to remove any waterblast residue which may contain traces of harmful substances.

First aid provision—users **MUST** be provided with suitable first aid facilities at the operation site.

PPE MAY INCLUDE:

Eye protection: Full face visor

Foot protection: Kevlar® brand or steel toe capped, waterproof, non-slip safety boots

Hand protection: Waterproof gloves

Head protection: Hard hat that accepts a full face visor and ear protection

Body protection: Multi-layer waterproof clothing approved for water jetting

Hose protection: Hose shroud

Respiratory protection: May be required; refer to job specific risk assessment

Bruna has designed and manufactured this equipment considering all hazards associated with its operation. Roberto Bruna assessed these risks and incorporated safety features in the design.

Bruna **WILL NOT** accept responsibility for the results of misuse.

IT IS THE RESPONSIBILITY OF THE INSTALLER/OPERATOR to conduct a job specific risk assessment prior to use. Job specific risk assessment **MUST** be repeated for each different set up, material, and location.

The risk assessment **MUST** conform to the Health and Safety at Work Act 1974 and other relevant Health and Safety legislation.

The risk assessment **MUST** consider potential material or substance hazards including: Aerosols, Biological and microbiological (viral or bacterial) agents, Combustible materials, Dusts, Explosion, Fibers, Flammable substances, Fluids, Fumes, Gases, Mists, Oxidizing Agents.

Limited lifetime Warranty

Our products come with a lifetime warranty limited to manufacturing defects only. The warranty covers defects in materials or workmanship that occur under normal use.

This warranty does not cover:
Damage caused by misuse, abuse, or negligence
Unauthorized repairs or modifications
Normal wear and tear

To make a warranty claim, proof of purchase is required, and the product must be inspected to confirm the issue is due to a manufacturing defect.



A high-contrast, black and white photograph of industrial machinery, likely a water jetting nozzle assembly. The image is covered in numerous water droplets, suggesting a wet or high-pressure environment. The machinery features various components, including a large cylindrical nozzle tip on the right and a complex assembly of pipes and fittings on the left. The background shows a textured surface with embossed patterns and some faint text, possibly "OPTIMIZED".

BRUNA

NOZZLES

info@jettingnozzles.com

www.jettingnozzles.com

OFFICE: (213) 283-7292